

2026





By Specialisation

Because the single-minded So professional

1 Company Profile

BIAN ELECTRIC founded in 2012, located in "electric liu town of wenzhou, is a collection of scientific research, development, manufacturing, sales in the integration of energy conservation and environmental protection high and new technology enterprise, is a professional research and development, the production of carbon fiber composite core aluminium conductor with hardware, twisted type hardware, and fixed wire clamp and other new type electric power, communications hardware of high and new technology enterprise.

In order to adapt to the 21st century, the development trend of China power and communications construction with high standard design, production, services for the purpose, the full use of the individual, successfully launched the carbon fiber composite core aluminium conductor with hardware, fixed wire clamp ground power and communications hardware series. With the produced by national authoritative organization detect certification, products in the domestic regional widely used in the power and communications lines. At present, the company products are sold

well all over the country and southeast Asia, well received by the majority of users. Company in line with to the technology strives for the development, strives for the survival by the quality of the principle, adhere to the user first,



2 Philosophy

Quality assurance is the highest praise for life.
Regard quality as the first vitality, solid China are
roots in the survival and development .This point,
the quality of this is solid the specific characteristics
of China's character and details of hydrophobic dew
, establish the brandA powerful guarantee

establish human-oriented management thought:
prevention first, safety first. People-oriented,
system management. Companies adhering to the "
to the ideaMal, people use concept specification "
dominant idea of building a secure enterprise.



3 Directory

不锈钢扎带/滚珠自锁式 01/02

包塑不锈钢扎带/滚珠自锁式 03

喷塑不锈钢扎带/滚珠自锁式 04

全喷塑不锈钢扎带/滚珠自锁式 05

L型不锈钢扎带 06

L型包塑不锈钢扎带/L型喷塑不锈钢扎带 07/08

牙型不锈钢扎带 09

不锈钢电缆标牌/不锈钢全能夹 10/11

扎带工具 12

不锈钢捆扎带 13

牙型不锈钢打包扣/L型不锈钢打包扣 14/15

螺丝 不锈钢打包扣 16

碳纤维复合芯导线用耐张线夹 17/18

碳纤维复合芯导线用中间接续管 19

耐热型悬垂线夹 (单导线) 20

预绞式耐热型悬垂线夹 (单导线) 21

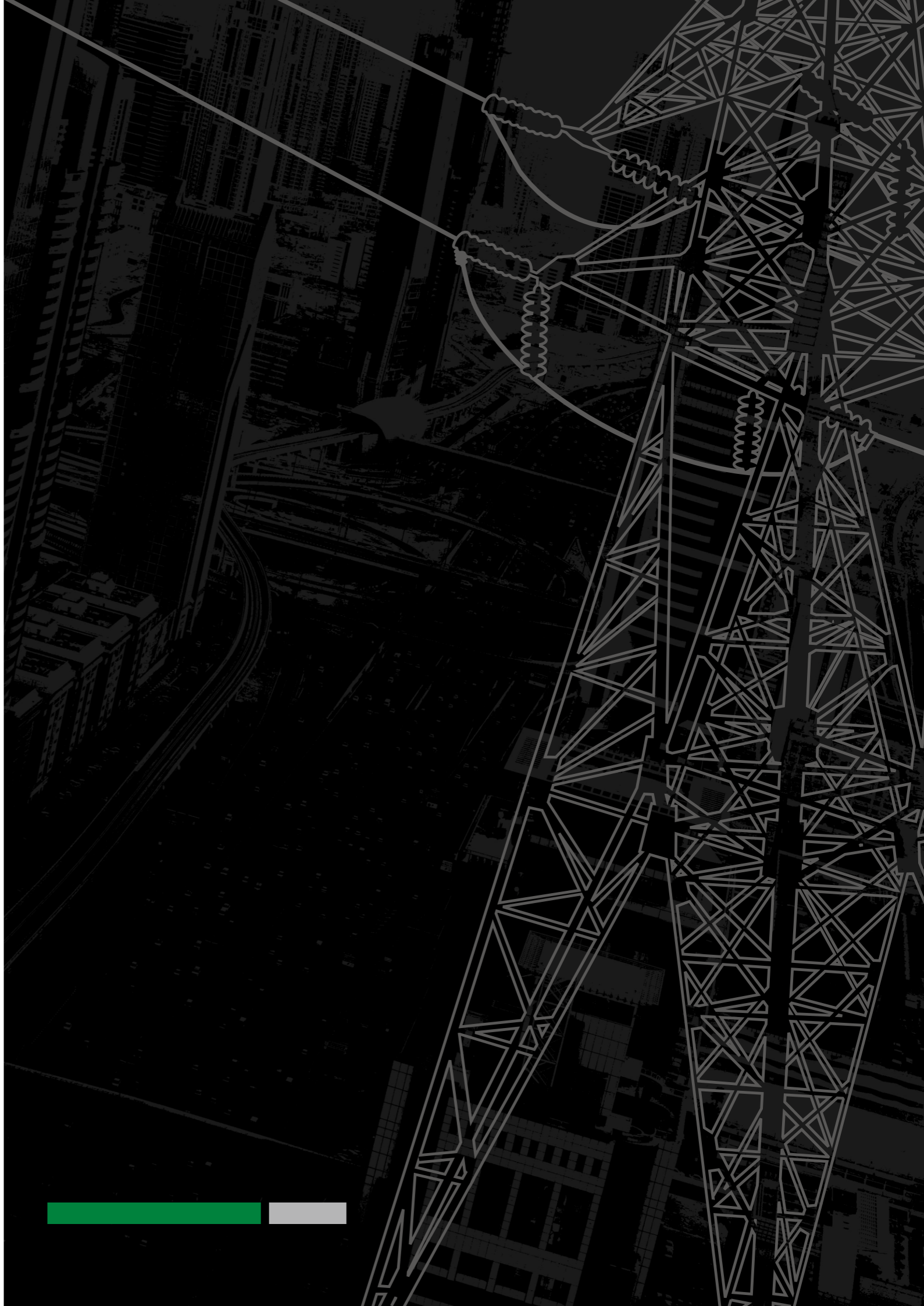
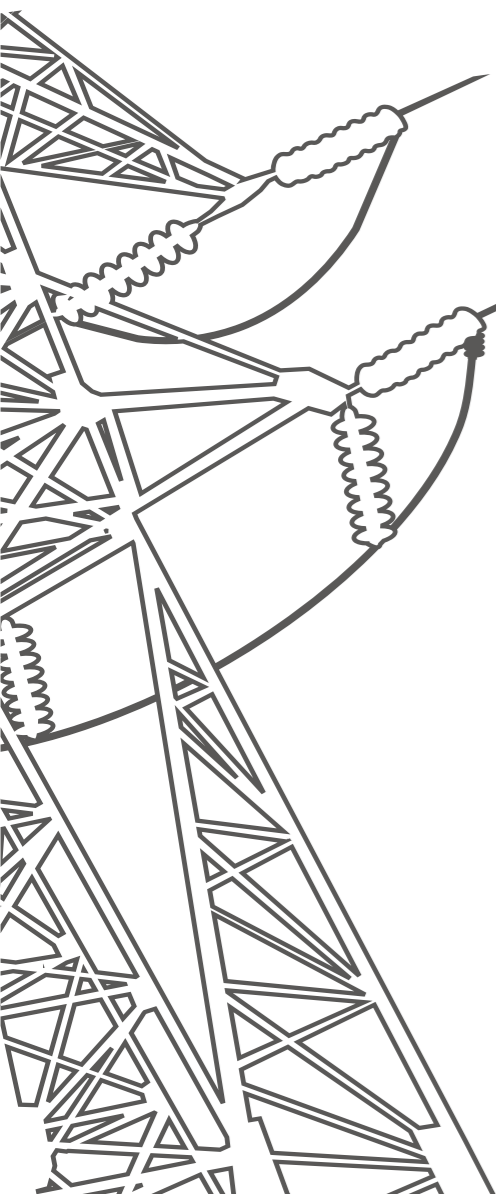
紧线用预绞式耐张线夹 22

紧线用加长型预绞式耐张线夹 23

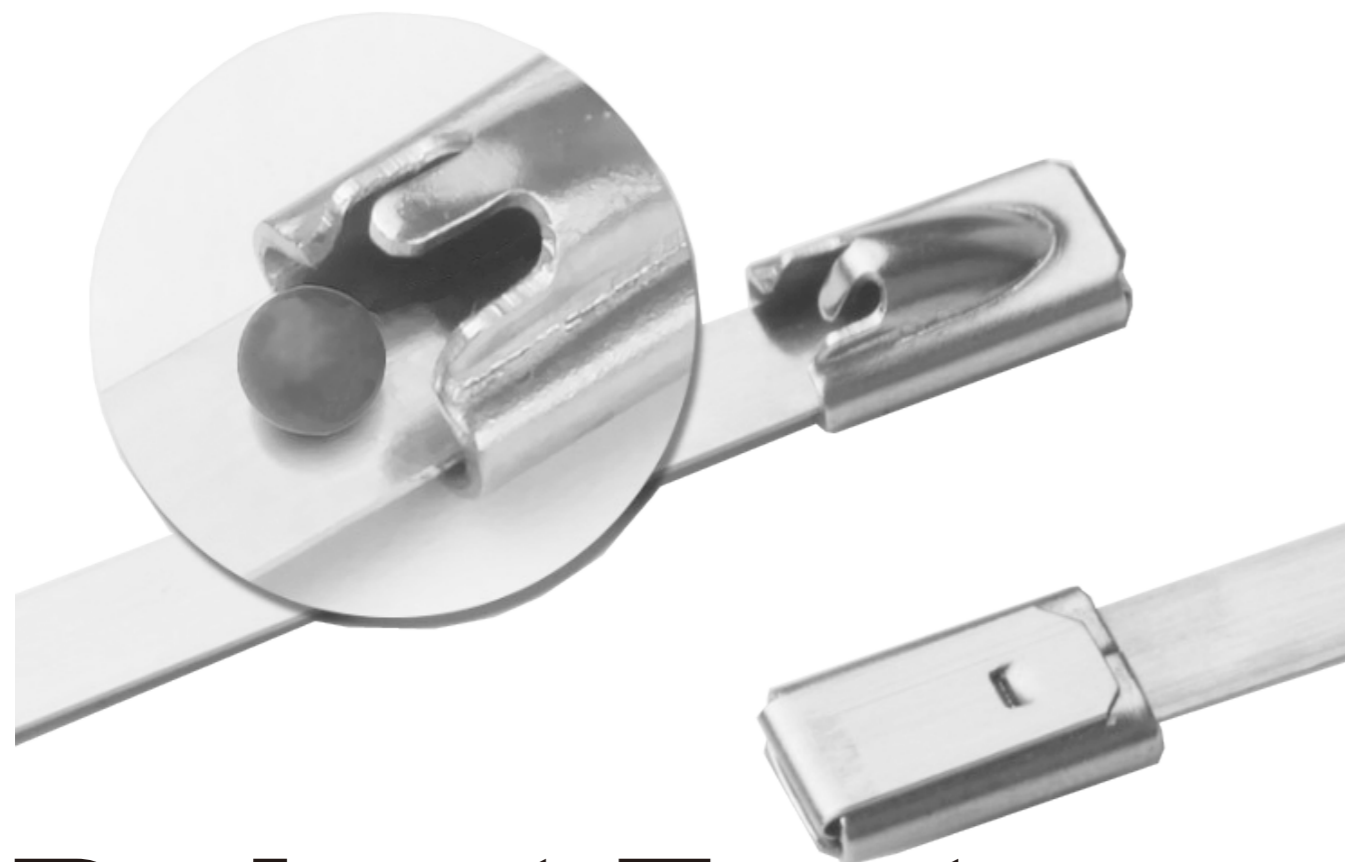
耐热型防震锤 24

耐热型设备线夹 25

耐热型T型线夹 26



01/ 不锈钢扎带

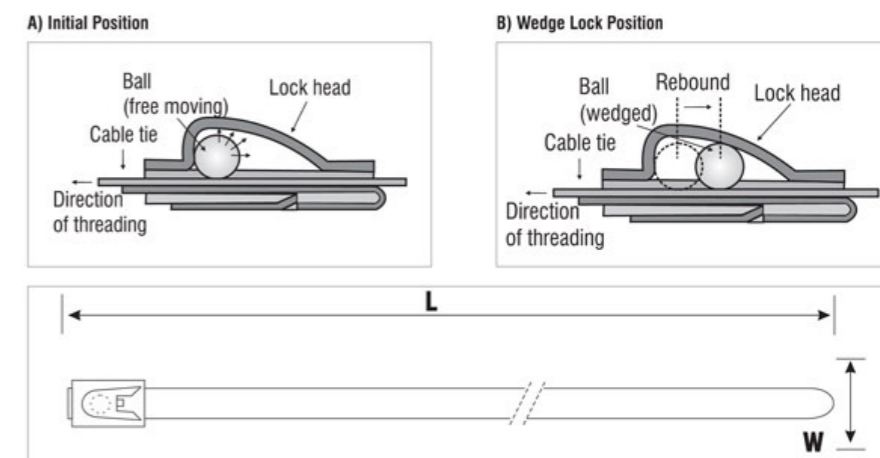


Product Features



不锈钢扎带滚珠自锁式/02

产品图样



Stainless steel cable ties-ball self lock

- Characteristic: They have a unique ball locking mechanism that allow easily and quickly installed and not undone;
- High tensile strength: Non-flammability;
- Temperature: Working temperature -60°C ~ 550°C;
- High resistance to acetic acid, alkali acid, sulphuric acid, corrode etc;
- All length are available, stainless steel type: 201、304、316.

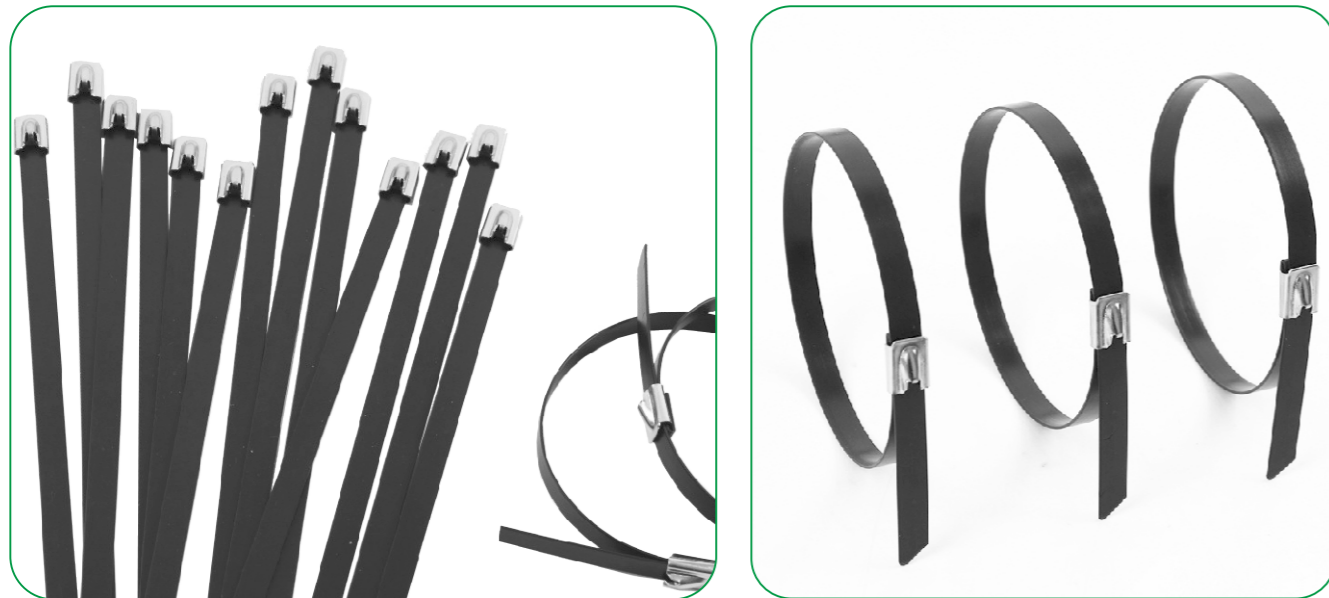


产品参数表

序号	规格型号 Part Number	宽度 Approx.Width mm(inch)	长度 Approx.Length mm(inch)	厚度 Thickness mm(inch)	拉力 Min.loop tensile Strength N(lbs)	(根/袋) Pcs/bag
1	GHG-4.6×100~GHG-4.6×2000	4.6 (0.181)	100~2000(3.93~78.74)	0.25(0.001)	800(180)	100
2	GHG-7.9×150~GHG-7.9×2000	7.9 (0.311)	150~2000(5.9~78.74)	0.25(0.001)	900(202)	100
3	GHG-10×200~GHG-10×2000	10(0.394)	200~2000(7.87~78.74)	0.25(0.001)	1000(225)	100
4	GHG-12×300~GHG-12×2000	12(0.472)	300~2000(11.8~78.74)	0.25(0.001)	1200(270)	100
5	GHG-16×300~GHG-16×2000	16(0.629)	300~2000(11.8~78.74)	0.4(0.015)	1500(337)	50
6	GHG-19×400~GHG-19×2000	19(0.748)	400~2000(15.75~78.74)	0.5(0.019)	1700(382)	50



产品图样



PVC Coated stainless steel cable tie-ball self lock

- Characteristic: They have an unique ball locking with PVC coating mechanism that allow easily and quickly installed and not undone;
- High tensile strength: Non-flammability;
- Temperature: Working temperature -40°C ~ 85°C;
- High resistance to acetic acid, alkali acid sulphuric acid, corrode. etc;
- All length are available, stainless steel type: 201, 304, 316.

产品参数表

序号	规格型号 Part Number	宽度 Approx.Width mm(inch)	长度 Approx.Length mm(inch)	厚度 Thickness mm(inch)	拉力 Min.loop tensile Strength N(lbs)	(根/袋) Pcs/bag
1	GHGB-4.6×150 ~ GHGB-4.6×600	4.6 (0.181)	150~600(5.9~23.62)	0.9(0.035)	300(67)	100
2	GHGB-5.6×150 ~ GHGB-5.6×600	5.6 (0.22)	150~600(5.9~23.62)	0.9(0.035)	350(79)	100
3	GHGB-8×200 ~ GHGB-8×600	8(0.314)	200~600(7.87~23.62)	0.9(0.035)	400(89)	100
4	GHGB-9×200 ~ GHGB-9×600	9(0.354)	200~600(7.87~23.62)	0.9(0.035)	450(101)	100



产品图样



Stainless steel epoxy coated cable ties-ball self lock

- Characteristic: They have an unique ball locking with plastic jetting mechanism that allow easily and quickly installed and not undone;
- High tensile strength: Non-flammability;
- Temperature: Working temperature -40°C ~ 85°C;
- High resistance to acetic acid, alkali acid, sulphuric acid, corrode etc;
- All length are available, stainless steel type: 304, 316.

产品参数表

序号	规格型号 Part Number	宽度 Approx.Width mm(inch)	长度 Approx.Length mm(inch)	厚度 Thickness mm(inch)	拉力 Min.loop tensile Strength N(lbs)	(根/袋) Pcs/bag
1	GHGP-4.6×150 ~ GHGP-4.6×600	4.6 (0.181)	150~600(5.9~23.62)	0.4(0.015)	600(135)	100
2	GHGP-7.9×150 ~ GHGP-7.9×600	7.9 (0.311)	150~600(5.9~23.62)	0.4(0.015)	800(180)	100
3	GHGP-10×200 ~ GHGP-10×1000	10(0.394)	200~1000(7.87~39.37)	0.4(0.015)	1000(225)	100
4	GHGP-12×200 ~ GHGP-12×1000	12(0.472)	200~1000(7.87~39.37)	0.4(0.015)	1200(270)	100
5	GHGP-16×300 ~ GHGP-16×1000	16(0.629)	300~1000(11.8~39.37)	0.4(0.015)	1500(337)	100



05/ 全喷塑不锈钢扎带-滚珠自锁式

产品图样



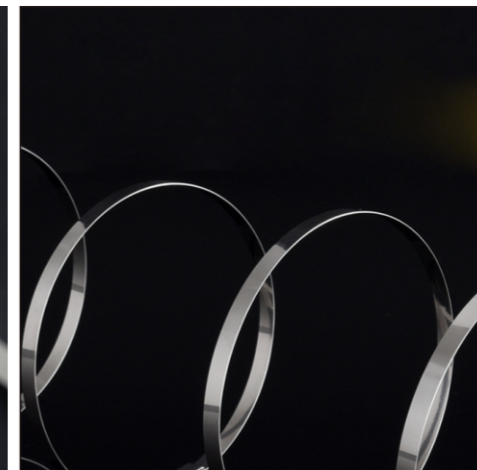
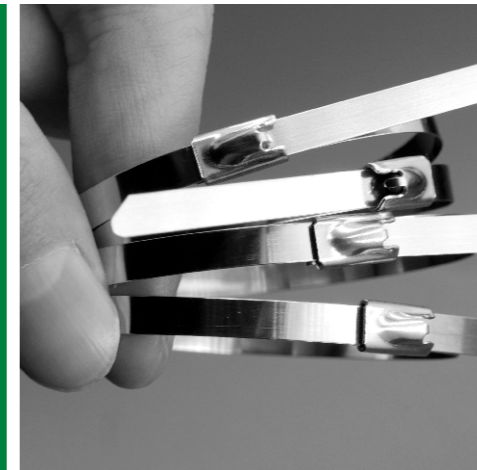
全喷塑不锈钢扎带-滚珠自锁式

Plastic full sprayed stainless steel coated tie-ball self lock

- 材料:采用不锈钢304、316材质,外喷环氧树脂热固性粉末涂料各种长度皆可制作,特殊规格按客户供样制作;
- 特性:耐酸、耐腐蚀、不易燃烧,抗张力强度高,滚珠式结构使其具有简单,快捷,不可解开等安装上的优势;;
- 温度: 工作范围 -40℃ ~85℃。
- Characteristic: They have an unique ball locking with plastic jetting mechanism that allow easily and quickly installed and not undone;
- High tensile strength: Non-flammability;
- Temperature: Working temperature -40℃ ~85℃;
- High resistance to acetic acid, alkali acid, sulphuric acid, corrode etc;
- All length are available, stainless steel type: 304, 316.

产品参数表

序号	规格型号 Part Number	宽度 Approx.Width mm(inch)	长度 Approx.Length mm(inch)	厚度 Thickness mm(inch)	拉力 Min.loop tensile Strength N(lbs)	(根/袋) Pcs/bag
1	GHQP-4.6×150~GHQP-4.6×600	4.6 (0.181)	150~600(5.9~23.62)	0.4(0.015)	600(135)	100
2	GHQP-7.9×150~GHQP-7.9×600	7.9 (0.311)	150~600(5.9~23.62)	0.4(0.015)	800(180)	100
3	GHQP-10×200~GHQP-10×1000	10(0.394)	200~1000(7.87~39.37)	0.4(0.015)	1000(225)	100
4	GHQP-12×200~GHQP-12×1000	12(0.472)	200~1000(7.87~39.37)	0.4(0.015)	1200(270)	100
5	GHQP-16×300~GHQP-16×1000	16(0.629)	300~1000(11.8~39.37)	0.4(0.015)	1500(337)	100





L型不锈钢扎带 /06

产品参数表

序号	规格型号 Part Number	宽度 Approx.Width mm(inch)	长度 Approx.Length mm(inch)	厚度 Thickness mm(inch)	拉力 Min.loop tensile Strength N(lbs)	(根/袋) Pcs/bag
1	GHL-8×200 ~ GHL-8×1000	8(0.314)	200~1000(7.87~39.37)	0.25(0.001)	800(180)	100
2	GHL-10×200 ~ GHL-10×1000	10(0.393)	200~1000(7.87~39.37)	0.25(0.001)	1000(225)	100
3	GHL-12×200 ~ GHL-12×1000	12(0.472)	200~1000(7.87~39.37)	0.25(0.001)	1200(270)	50
4	GHL-16×300 ~ GHL-16×1000	16(0.629)	300~1000(11.8~39.37)	0.4(0.015)	1500(337)	50
5	GHL-19×300 ~ GHL-19×1000	19(0.748)	300~1000(11.8~39.37)	0.4(0.015)	2000(440)	50

L型不锈钢扎带

L-Type naked stainless steel cable tie

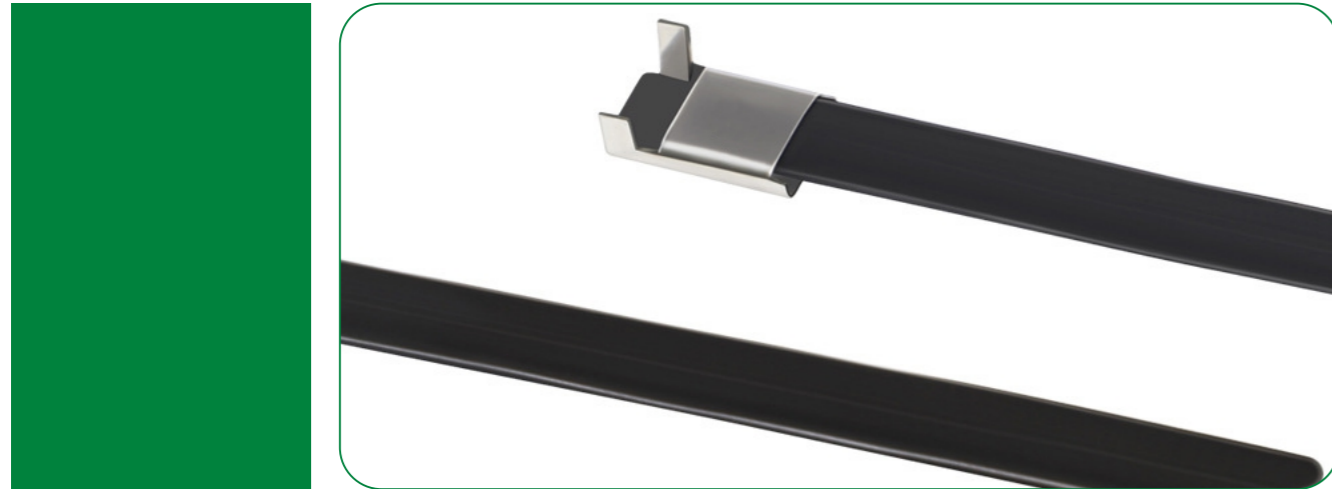
- 材料:采用不锈钢201、304、316材质,各种长度皆可制作,特殊规格按客户供样制作;
- 特性:耐酸、耐腐蚀、抗张力强度高,L型突起式结构使其具有简单快捷等优势;
- 温度: 工作范围 -60°C ~550°C。
- Characteristic: They have an unique with plastic jetting mechanism that allow easily and quickly installed and not undone;
- High tensile strength: Non-flammability;
- Temperature: Working temperature -60°C ~550°C;
- High resistance to acetic acid, alkali acid, sulphuric acid, corrode etc;
- All length are available, stainless steel type: 201.304, 316.

产品图样





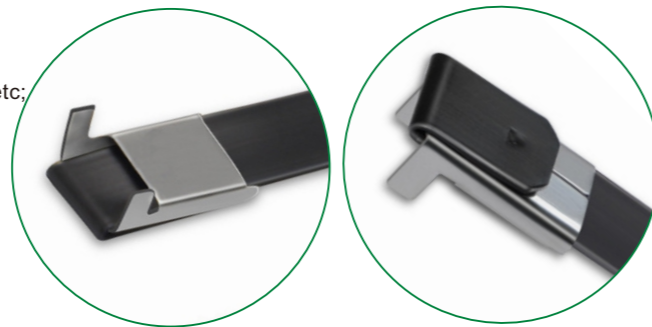
07/ L型包塑不锈钢扎带



L型包塑不锈钢扎带

L-Type PVC coated stainless steel cable tie

- 材料:采用不锈钢201、304、316材质,外包PVC电缆料,各种长度皆可制作,特殊规格按客户供样制作;
- 特性:耐酸、耐腐蚀、抗张力强度高,L型突起式结构使其具有简单快捷等优势;
- 温度: 工作范围 -40°C ~85°C。
- Characteristic: They have an unique with PVC coating mechanism that allow easily and quickly installed and not undone;
- High tensile strength: Non-flammability;
- Temperature: Working temperature -40°C ~85°C;
- High resistance to acetic acid, alkali acid, sulphuric acid, corrode etc;
- All length are available, stainless steel type: 201,304, 316.



产品参数表

序号	规格型号 Part Number	宽度 Approx.Width mm(inch)	长度 Approx.Length mm(inch)	厚度 Thickness mm(inch)	拉力 Min.loop tensile Strength N(lbs)	(根/袋) Pcs/bag
1	GHLB-8×200~GHLB-8×1000	8(0.314)	200~1000(7.87~39.37)	0.9(0.035)	800(180)	100
2	GHLB-10×200~GHLB-10×1000	10(0.393)	200~1000(7.87~39.37)	0.9(0.035)	1000(225)	100
3	GHLB-12×200~GHLB-12×1000	12(0.472)	200~1000(7.87~39.37)	0.9(0.035)	1200(270)	50
4	GHLB-16×300~GHLB-16×1000	16(0.629)	300~1000(11.8~39.37)	1.2(0.047)	1500(337)	50
5	GHLB-19×300~GHLB-19×1000	19(0.748)	300~1000(11.8~39.37)	1.2(0.047)	2000(440)	50



L型喷塑不锈钢扎带 / 08

产品参数表

序号	规格型号 Part Number	宽度 Approx.Width mm(inch)	长度 Approx.Length mm(inch)	厚度 Thickness mm(inch)	拉力 Min.loop tensile Strength N(lbs)	(根/袋) Pcs/bag
1	GHLP-8×200~GHLP-8×1000	8(0.314)	200~1000(7.87~39.37)	0.9(0.035)	800(180)	100
2	GHLP-10×200~GHLP-10×1000	10(0.393)	200~1000(7.87~39.37)	0.9(0.035)	1000(225)	100
3	GHLP-12×200~GHLP-12×1000	12(0.472)	200~1000(7.87~39.37)	0.9(0.035)	1200(270)	50
4	GHLP-16×300~GHLP-16×1000	16(0.629)	300~1000(11.8~39.37)	1.2(0.047)	1500(337)	50
5	GHLP-19×300~GHLP-19×1000	19(0.748)	300~1000(11.8~39.37)	1.2(0.047)	2000(440)	50

L型不锈钢喷塑扎带

L-Type plastic sprued stainless steel cable tie

- 材料:采用不锈钢304、316材质,外喷环氧树脂热固性粉末涂料各种长度皆可制作,特殊规格按客户供样制作;
- 特性:耐酸、耐腐蚀、不易燃烧,抗张力强度高,滚珠式结构使其具有简单,快捷,不可解开等安装上的优势;
- 温度: 工作范围 -40°C ~85°C。
- Characteristic: They have an unique ball locking with plastic jetting mechanism that allow easily and quickly installed and not undone;
- High tensile strength: Non-flammability;
- Temperature: Working temperature -40°C ~85°C;
- High resistance to acetic acid, alkali acid, sulphuric acid, corrode etc;
- All length are available, stainless steel type: 304, 316.

产品图样





09/ 牙型不锈钢扎带

产品图样



牙型不锈钢扎带

Stainless Steel cable tie-Tooth lock type

- 材料:采用不锈钢201、304、316材质,各种长度皆可制作,特殊规格按客户供样制作;
- 特性:耐酸、耐腐蚀、抗张力强度高,使用简单,快捷等优势;
- 温度:工作范围 -60°C ~ 550°C.
- Characteristic: They have an unique Tooth locking mechanism that allow easily and quickly installed and not undone;
- High tensile strength: Non-flammability;
- Temperature: Working temperature -60°C ~ 550°C;
- High resistance to acetic acid, alkali acid sulphuric acid,corrode. etc;
- All length are available, stainless steel type: 201,304,316.

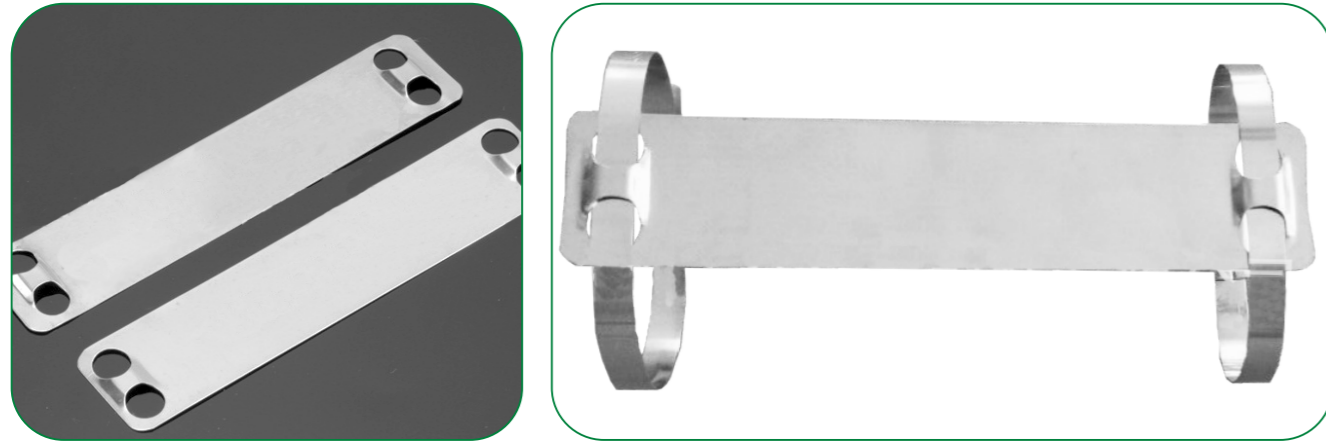
产品参数表

序号	规格型号 Part Number	宽度 Approx.Width mm(inch)	长度 Approx.Length mm(inch)	厚度 Thickness mm(inch)	拉力 Min loop tensile Strength N(lbs)	(根/袋) Pcs/bag
1	GHT-8×200~GHT-8×1000	8(0.314)	200~1000(7.87~39.37)	0.25~0.6(0.001~0.023)	800(180)	100
2	GHT-10×200~GHT-10×1000	10(0.393)	200~1000(7.87~39.37)	0.25~0.6(0.001~0.023)	1000(225)	100
3	GHT-12×200~GHT-12×1000	12(0.472)	200~1000(7.87~39.37)	0.25~0.8(0.001~0.031)	1200(270)	50
4	GHT-16×300~GHT-16×1000	16(0.629)	300~1000(11.8~39.37)	0.4~0.8(0.015~0.031)	1500(337)	50
5	GHT-19×300~GHT-19×1000	19(0.748)	300~1000(11.8~39.37)	0.4~0.8(0.015~0.031)	2000(440)	50



10/ 不锈钢电缆标牌

产品图样



不锈钢电缆标牌 Stainless Steel Marker Plate

- 材质:不锈钢电缆标志牌采用优质304不锈钢(316供选),产品光亮、无毛刺。一般绑在电缆上用于标记电缆
- 方法:使用时用两根宽度4.6mm的扎带固定。
- Characteristic: Stainless steel cable signs of high quality 304 stainless steel (316 for the election) the product bright, No glitches. Generally tied to the cable for marking cables
- Methods: 4.6mm width of ties with two fixed use

产品参数表

序号	规格型号 Part Number	宽度 Approx.Width mm(inch)	长度 Approx.Length mm(inch)	厚度 Thickness mm(inch)	(根/袋) Pcs/bag
1	GHD-9.5×89	9.5	89	0.4	100
2	GHD-10×89	10	89	0.4	100
3	GHD-12×110	12	110	0.4	100
4	GHD-15×110	15	110	0.4	100
5	GHD-19×89	19	89	0.4	100
6	GHD-19×110	19	110	0.4	100
7	GHD-40×50	40	50	1.5	100
8	GHD-30×60	30	60	1.5	100
9	GHD-25×60	25	60	1.5	100
10	GHD-20×45	20	45	1.5	100

不锈钢全能夹 /11

产品参数表

序号	规格型号 Part Number	宽度 Approx.Width mm(inch)	长度 Approx.Length mm(inch)	宽度 Approx.Width mm(inch)	扎带扣尺寸 Size of S.S.Banding mm/inch
1	GH-Q32×17	9.5	32(1.26)	0.17(0.67)	20/0.76
2	GH-Q32×22	10	32(1.26)	22(0.87)	
3	GH-Q32×25	12	32(1.26)	25(0.98)	
4	GH-Q32×30	15	32(1.26)	30(1.18)	
5	GH-Q70×13	19	70(2.76)	13(0.51)	
6	GH-Q70×17	19	70(2.76)	17(0.67)	
7	GH-Q70×19	40	70(2.76)	19(0.75)	
8	GH-Q70×22	30	70(2.76)	22(0.87)	
9	GH-Q70×25	25	70(2.76)	25(0.98)	
10	GH-Q70×30	20	70(2.76)	30(1.18)	

不锈钢全能夹

Stainless Steel Marker Plate

- 材料:不锈钢201、304、316
- 用途:与同等宽度的不锈钢打包带一起使用,石油化工、保温管道、桥梁、输油管道、线缆、交通标志牌、广告牌、电力标志牌、电缆托架等捆扎固定。
- Material: stainless steel 201,304,316
- Uses: with the same width stainless steel strap used together, petro-chemical, pipe insulation, Bridges, pipelines, cables, traffic signs,billboards, electric signs, Cable trays and other bundled fixed.

产品图样



12/ 扎带工具

产品图样



● LQG不锈钢扎带工具

LQG150 STAINLESS CABLE TIES TOOL

- 适用于自锁式不锈钢扎带,适用扎带宽度4.6mm-8mm,厚度0.4以下。具有收紧切断功能,经济实惠。

- With the function of tensioning&cutting etc, suitable for self-lock stainless steel cable ties
- Cable ties: width: 4.6mm-8mm, thickness: 0.25mm-0.4mm



● LQA打包工具

LQA STRAP BANDING TOOL

- 适用于各种不锈钢打包带、不锈钢扎带,适用扎带宽度8mm-20mm,厚度0.8mm以下。具有收紧切断功能。

- With the function of tensioning& cutting etc. suitable for strap banding, self-lock stainless steel cable ties
- Cable ties: width: 8mm-20mm,
- Thickness: 0.25mm-0.8mm



● LQQ不锈钢扎带工具

LQQ STAINLESS CABLE TIES TOOL

- 适用于自锁式不锈钢扎带适用扎带宽度4.6mm-8mm厚度0.4以下。具有收紧自动切断功能。

- With the function of tensioning & auto-self cutting etc suitable for self-lock stainless steel cable ties
- Cable ties: width: 4.6mm-8mm, thickness: 0.25mm-0.4mm

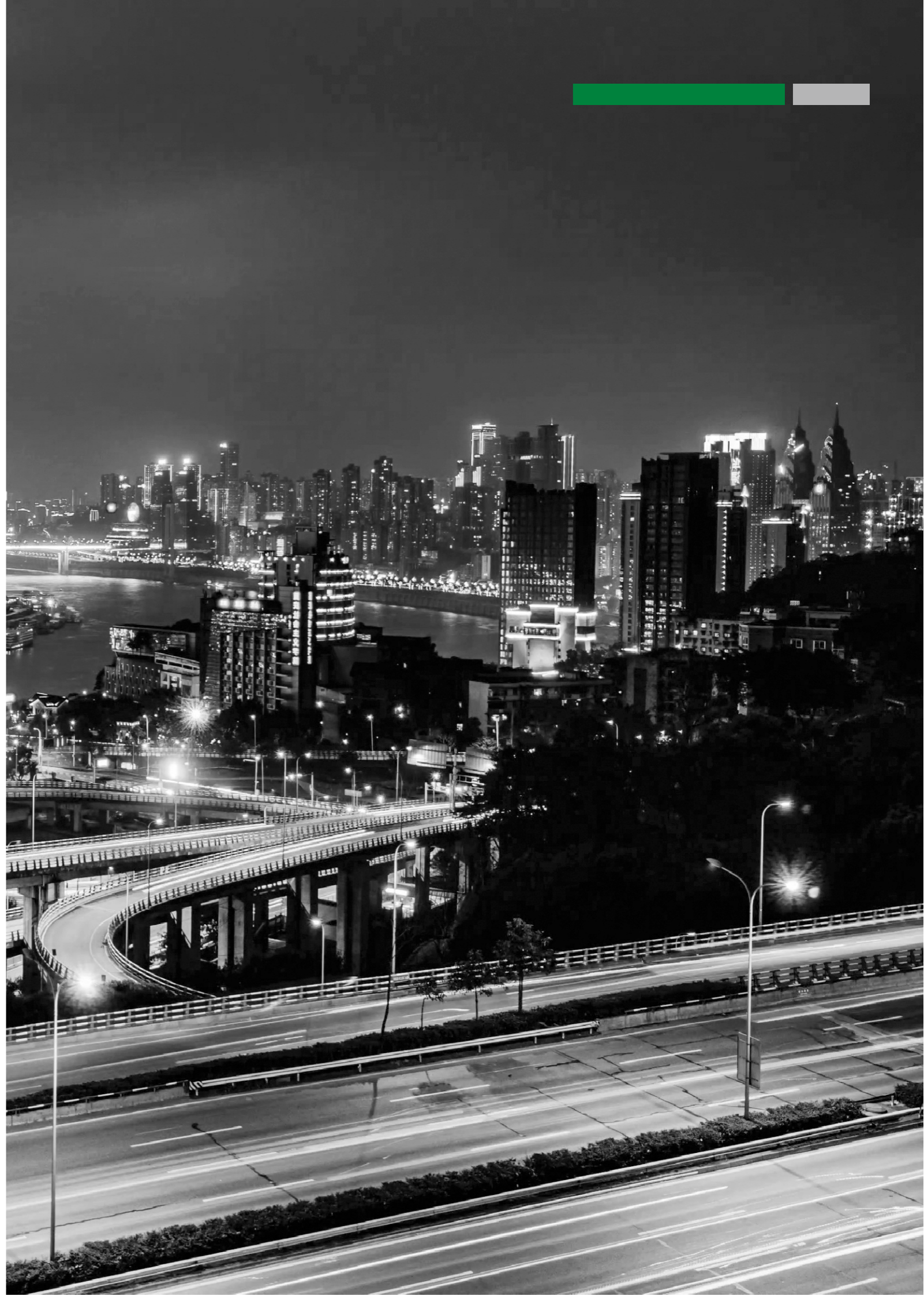


● LQY重型手摇式扎带工具

LQY HEAVY DUTY HAND-OPERATING STRAP BANDING TOOL

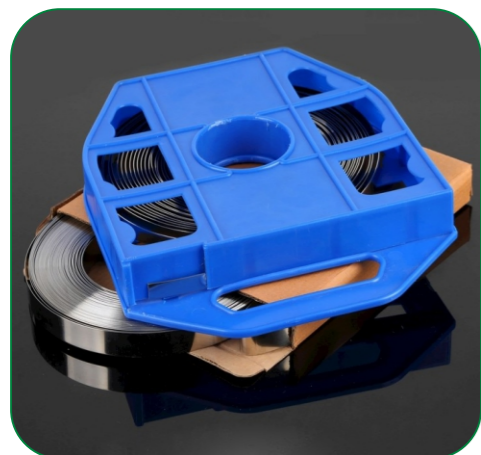
- 适用扎带宽度8mm-25mm,厚度1mm以下。具有收紧切断功能

- With the function of tensioning & cutting etc. suitable for strap banding, stainless steel cable ties
- Cable ties: width: 8mm-20mm, thickness: 0.25mm-0.8mm



13/ 不锈钢捆扎带 Stainless Steel Band

产品图样



- 产品特点 Product Features: 不锈钢打包带与牙型打包扣、L型打包和配套使用，安装时可用专业打包工具。使用时可以需要多长拉出多长，使用灵活不浪费。
- 材质: 201、304、316不锈钢。
- 领域: 石油化工、保温管道、桥梁、输油管道、线缆、交通标志牌广告牌、电力标志牌、电缆托架等捆扎固定。
- 包装: 30m/卷, 30.5m/卷, 50m/卷, 纸盒包装(塑料盒可选)
- 规格: 宽度6mm-25mm, 厚度0.2mm-1mm均可订做。

Material: stainless steel 201, 304, 316.
 Application areas: petroleum chemical industry, bridges, pipelines, cables, traffic signs, billboards, signs, such as electric cable bracket banding fixed.
 Packing: 30m/roll, 30.5m/roll, 50m/roll, carton packaging (plastic box optional).
 Specification: width 6mm-25mm, thickness 0.2mm-1mm can be customized.

产品参数表

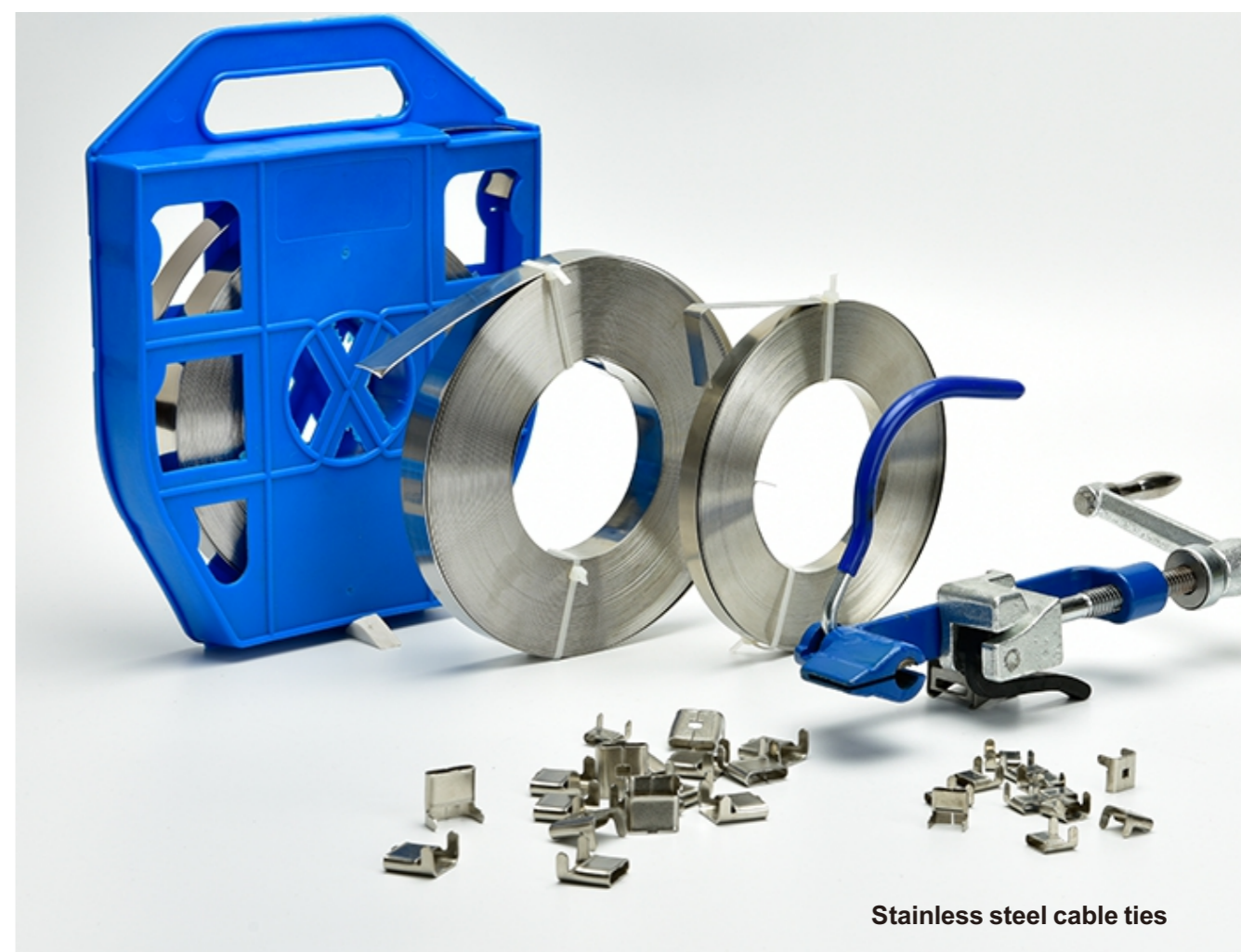
Domestic 内销型

序号	型号 Part Number	规格 Size	宽度 Approx. Width mm(inch)	厚度 Thickness mm(inch)	配套搭扣		(根/袋) Pcs/bag
					L扣	牙扣	
1	GH0825	8×0.25	8	0.25	L8	Y8	50米
2	GH0830	8×0.30		0.3			
3	GH0840	10×0.40		0.4			
4	GH1025	10×0.25	10	0.25	L10	Y10	50米
5	GH1030	10×0.30		0.3			
6	GH1040	10×0.40		0.4			
7	GH1225	12×0.25	12	0.25	L12	Y12	50米
8	GH1240	12×0.40		0.4			
9	GH1250	12×0.50		0.5			
10	GH1260	12×0.60	16	0.6	L16	Y16	50米
11	GH1640	16×0.40		0.4			
12	GH1650	16×0.50		0.5			
13	GH1660	16×0.60	19	0.6	L19	Y19	30米
14	GH1670	16×0.70		0.7			
15	GH1676	16×0.76		0.76			
16	GH1940	19×0.40	19	0.4	L19	Y19	50米
17	GH1950	19×0.50		0.5			
18	GH1960	19×0.60		0.6			
19	GH1970	19×0.70	19	0.7	L19	Y19	30米
20	GH1980	19×0.80		0.8			

产品参数表

(Export) 出口型

型号 Part Number	规格 Size	宽度 Width		厚度 (mm) Thickness	包装 Package ft/roll
		Inches	mm		
GH0638	6.4×0.38	1/4	6.4	0.38	100(30.5)/盒
GH0938	9.5×0.38	3/8	9.5	0.38	100(30.5)/盒
GH1040	10×0.4	3/8	10	0.4	100(30.5)/盒
GH1340	12.7×0.4	1/2	12.7	0.4	100(30.5)/盒
GH1640	16×0.4	5/8	16	0.4	100(30.5)/盒
GH1940	19×0.4	3/4	19	0.4	100(30.5)/盒
GH1376	12.7×0.76	1/2	13	0.76	100(30.5)/盒
GH1676	16×0.76	5/8	16	0.76	100(30.5)/盒
GH1970	19×0.7	3/4	19	0.7	100(30.5)/盒
GH1976	19×0.76	3/4	19	0.76	100(30.5)/盒



Stainless steel cable ties

14/ 牙型不锈钢打包扣

产品图样



牙型不锈钢打包扣 Teeth Stainless Steel Buckle

- 材料:不锈钢201、304、316
- 用途:与同等宽度的不锈钢打包带一起使用,石油化工、保温管道、桥梁、输油管道、线缆、交通标志牌、广告牌、电力标志牌、电缆托架等捆扎固定。
- Material: stainless steel 201,304,316
- Uses: with the same width stainless steel strap used together, petro-chemical, pipe insulation, Bridges, pipelines, cables, traffic signs, billboards, electric signs, Cable trays and other bundled fixed.

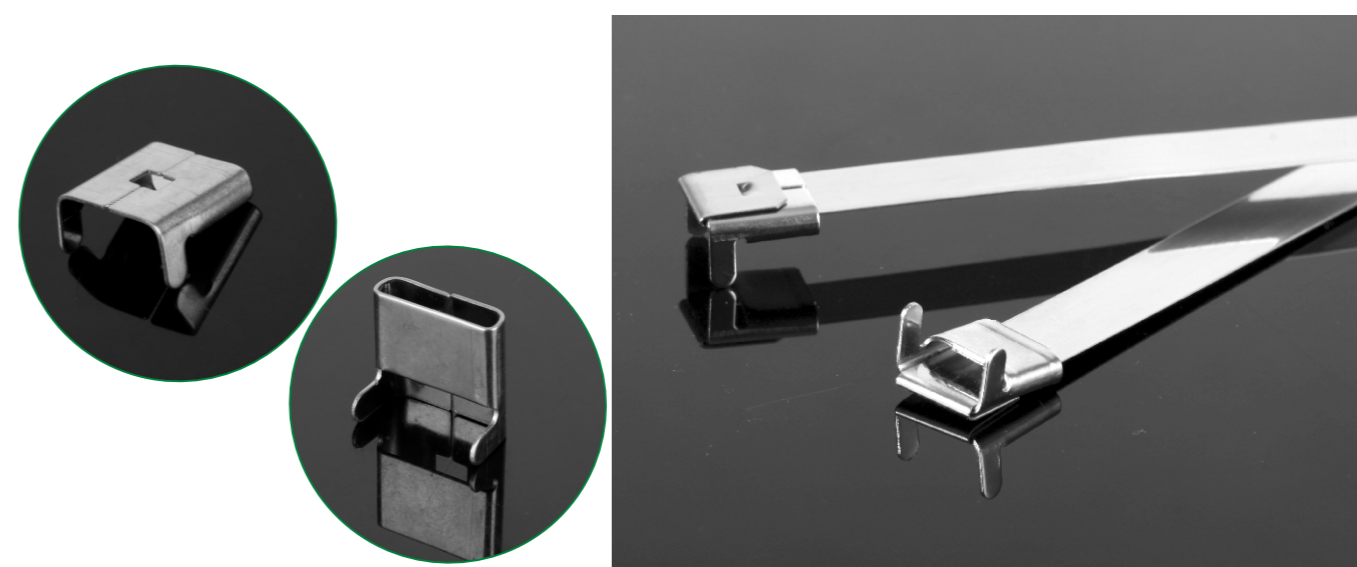
产品参数表

牙型不锈钢打包扣 (Teeth Stainless Steel Buckle)

型号Part Number	宽度 Approx.Width mm(inch)	厚度(mm)Thickness	包装PCS/boxPackage
GH-Y6.4	6.4(0.251)	0.5	100
GH-Y10	10(0.393)	1	100
GH-Y12.7	12.7(0.5)	1.2	100
GH-Y16	16(0.629)	1.2	100
GH-Y19	19(0.748)	1.5	100
GH-Y25	25(0.984)	1.8	50
GH-Y30	30(1.181)	2.3	50

L型不锈钢打包扣 /15

产品图样



L型不锈钢打包扣 L Stainless Steel Packaging Deduction

- 材料:不锈钢201、304、316
- 用途:与同等宽度的不锈钢打包带一起使用,石油化工、保温管道、桥梁、输油管道、线缆、交通标志牌、广告牌、电力标志牌、电缆托架等捆扎固定。
- Material: stainless steel 201,304,316
- Uses: with the same width stainless steel strap used together, petro-chemical, pipe insulation, Bridges, pipelines, cables, traffic signs, billboards, electric signs, Cable trays and other bundled fixed.

产品参数表

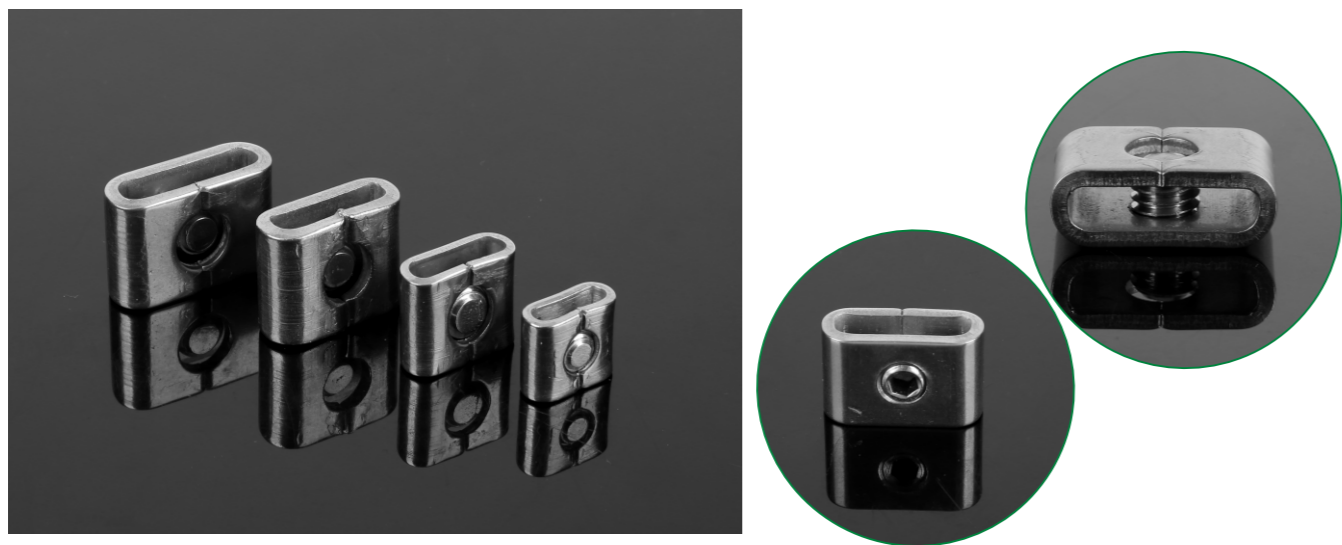
L型不锈钢打包扣 (L Stainless Steel Packaging Deduction)

型号Part Number	宽度 Approx.Width mm(inch)	厚度(mm)Thickness	包装PCS/boxPackage
GH-L6.4	6.4(0.251)	0.7	100
GH-L10	10(0.393)	0.7	100
GH-L12.7	12.7(0.5)	0.7	100
GH-L16	16(0.629)	0.7	100
GH-L19	19(0.748)	0.8	100
GH-L25	25(0.984)	1.2	50
GH-L30	30(1.181)	1.2	50



16/ 螺丝不锈钢打包扣

产品图样



螺丝不锈钢打包扣

Screw Steel Band

- 材料:不锈钢201、304、316
- 用途:与同等宽度的不锈钢打包带一起使用,石油化工、保温管道、桥梁、输油管道、线缆、交通标志牌、广告牌、电力标志牌、电缆托架等捆扎固定。
- Material: stainless steel 201,304,316
- Uses: with the same width stainless steel strap used together, petro-chemical, pipe insulation, Bridges, pipelines, cables, traffic signs, billboards, electric signs, Cable trays and other bundled fixed.

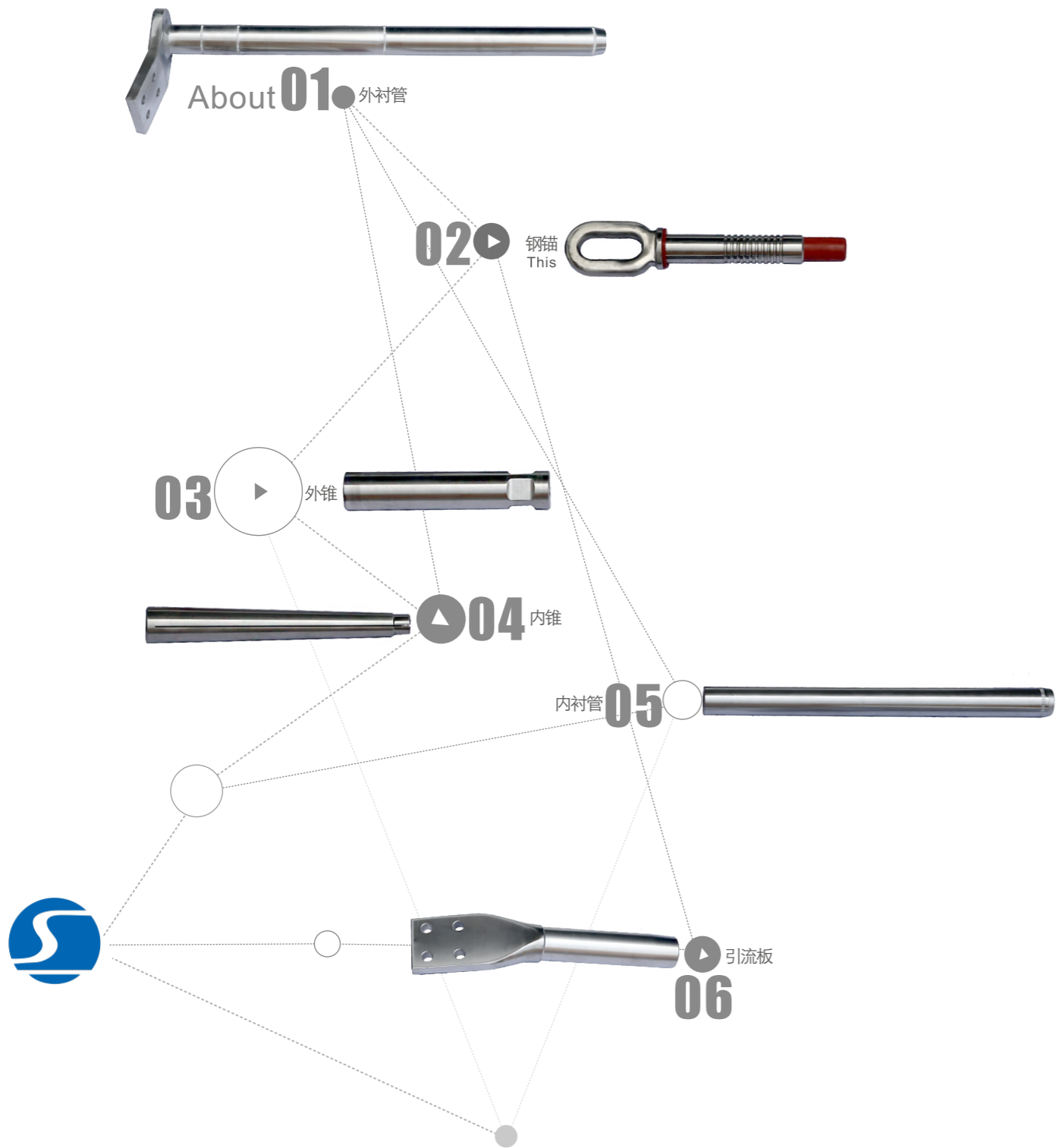
产品参数表

牙型不锈钢打包扣 (Teeth Stainless Steel Buckle)

型号Part Number	宽度 Approx.Width mm(inch)	厚度(mm)Thickness	包装PCS/boxPackage
GH-Y6.4	6.4(0.251)	1.2	100
GH-Y10	10(0.393)	1.5	100
GH-Y12.7	12.7(0.5)	1.8	50
GH-Y16	16(0.629)	2.2	25
GH-Y19	19(0.748)	2.2	25

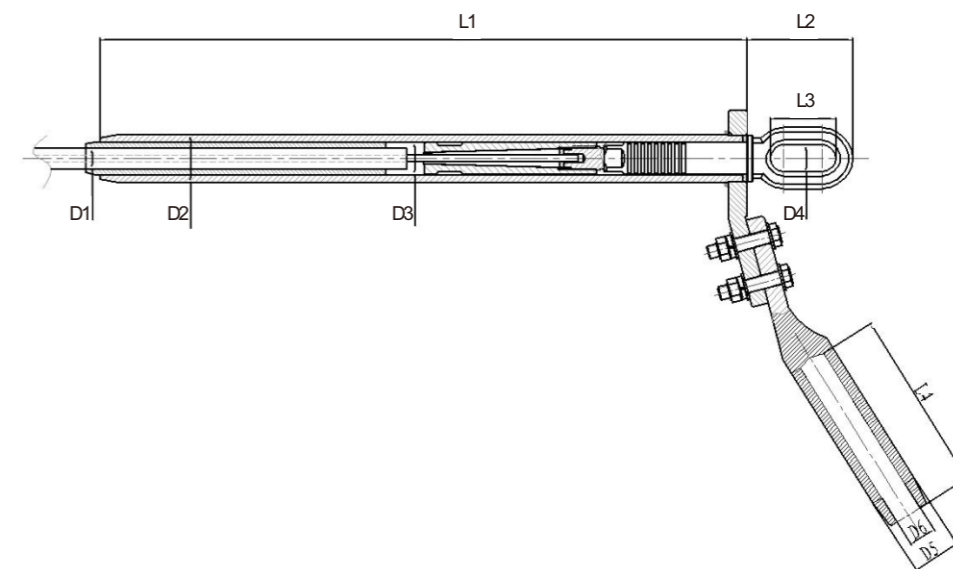


17/ 碳纤维复合芯导线用耐张线夹



碳纤维复合芯导线用耐张线夹/18

总装图

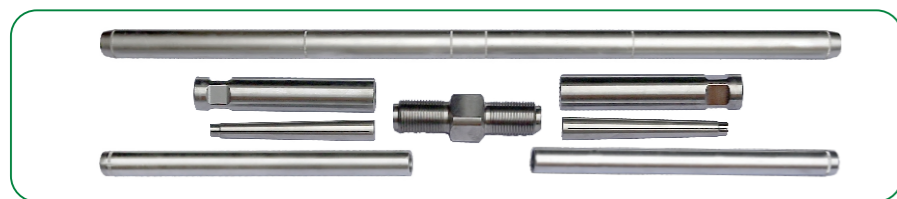


产品参数表

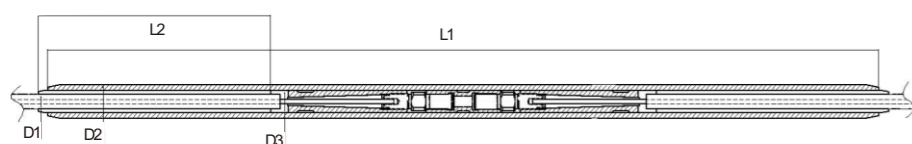
序号	型号	适用导线(mm)	芯棒直径(mm)	主要尺寸(mm)										常温计算拉断力(KN)
				D1	D2	D3	D4	D5	D6	L1	L2	L3	L4	
1	NY-JLRX/T-120/25	14.0	5.5	15.5	50	34	28	40	15.5	670	112	68	180	63.9
2	NY-JLRX/T-150/30	15.6	6.0	17.5	50	34	28	40	17.5	670	112	68	180	76.5
3	NY-JLRX/T-185/30	17.1	6.0	19	50	34	28	40	19	670	112	68	180	78.6
4	NY-JLRX/T-200/30	17.7	6.0	19.5	50	34	28	40	19.5	670	112	68	180	79.5
5	NY-JLRX/T-240/30	19.1	6.0	21	50	34	28	45	21	760	112	68	180	81.6
6	NY-JLRX/T-300/40	21.5	7.0	23	50	34	28	45	23	760	112	68	180	109.7
7	NY-JLRX/T-360/40	23.3	7.0	25	50	34	28	45	25	760	112	68	180	113.1
8	NY-JLRX/T-400/50	24.8	8.0	26.5	50	34	28	45	26.5	760	112	68	180	143.5
9	NY-JLRX/T-450/50	26.1	8.0	28	50	34	28	45	28	760	112	68	180	146.5
10	NY-JLRX/T-500/50	27.4	8.0	29	65	45	32	60	29	810	131	86	180	149.5
11	NY-JLRX/T-500/55	27.6	8.5	29.5	65	45	32	60	29.5	810	131	86	180	165.1
12	NY-JLRX/T-560/55	29.0	8.5	31	65	45	32	60	31	810	131	86	180	168.5
13	NY-JLRX/T-560/65	29.2	9.0	31	65	45	32	60	31	810	131	86	180	185.1
14	NY-JLRX/T-570/65	29.35	9.0	31.5	65	45	32	60	31.5	810	131	86	180	185.6
15	NY-JLRX/T-630/55	30.5	8.5	32.5	65	45	32	60	32.5	810	131	86	180	172.5
16	NY-JLRX/T-630/70	30.9	9.5	33	65	45	32	60	33	810	131	86	180	206.4

19/碳纤维复合芯导线接续金具

产品图样



总装图

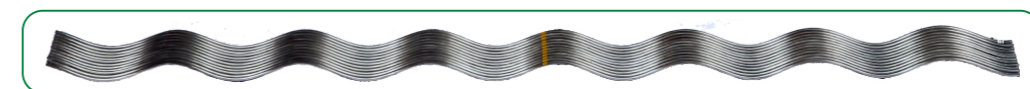


产品参数表

序号	型号	适用导线(mm)	芯棒直径(mm)	主要尺寸(mm)					常温计算拉断力(KN)
				D1	D2	D3	L1	L2	
1	JY-JLRX/T-120/25	14.0	5.5	15.5	50	34	900	250	63.9
2	JY-JLRX/T-150/30	15.6	6.0	17.5	50	34	900	250	76.5
3	JY-JLRX/T-185/30	17.1	6.0	19	50	34	900	250	78.6
4	JY-JLRX/T-200/30	17.7	6.0	19.5	50	34	900	250	79.5
5	JY-JLRX/T-240/30	19.1	6.0	21	50	34	900	250	81.6
6	JY-JLRX/T-300/40	21.5	7.0	23	50	34	900	250	109.7
7	JY-JLRX/T-360/40	23.3	7.0	25	50	34	900	250	113.1
8	JY-JLRX/T-400/50	24.8	8.0	26.5	50	34	900	250	143.5
9	JY-JLRX/T-450/50	26.1	8.0	28	50	34	900	250	146.5
10	JY-JLRX/T-500/50	27.4	8.0	29	65	45	1100	310	149.5
11	JY-JLRX/T-500/55	27.6	8.5	29.5	65	45	1100	310	165.1
12	JY-JLRX/T-560/55	29.0	8.5	31	65	45	1100	310	168.5
13	JY-JLRX/T-560/65	29.2	9.0	31	65	45	1100	310	185.1
14	JY-JLRX/T-570/65	29.35	9.0	31.5	65	45	1100	310	185.6
15	JY-JLRX/T-630/55	30.5	8.5	32.5	65	45	1100	310	172.5
16	JY-JLRX/T-630/70	30.9	9.5	33	65	45	1100	310	206.4

耐热型悬垂线夹 (单导线)/20

产品图样

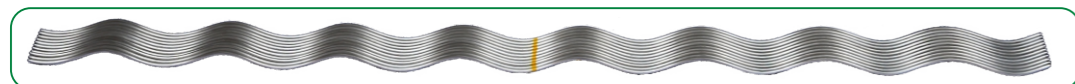
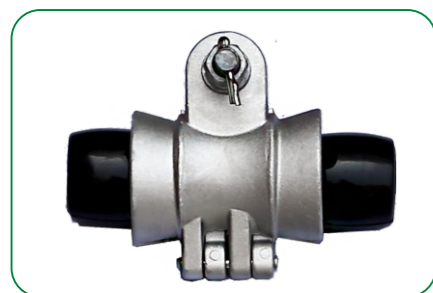


产品参数表

序号	规格型号	适用导线(mm)	护线条长度(mm)	色标	破坏载荷(KN)
1	CL-JLRX/T-120/25-4	14.0	1100	●	70
2	CL-JLRX/T-150/30-4	15.6	1100	●	
3	CL-JLRX/T-185/30-4	17.1	1100	●	
4	CL-JLRX/T-200/30-4	17.7	1100	●	
5	CL-JLRX/T-240/30-5	19.1	1300	●	
6	CL-JLRX/T-300/40-5	21.5	1400	●	
7	CL-JLRX/T-360/40-5	23.3	1400	●	
8	CL-JLRX/T-400/50-6	24.8	1600	●	90
9	CL-JLRX/T-450/50-6	26.1	1600	●	
10	CL-JLRX/T-500/50-6	27.4	1600	●	
11	CL-JLRX/T-500/55-6	27.6	1600	●	
12	CL-JLRX/T-560/55-6	29.0	1700	●	
13	CL-JLRX/T-560/65-6	29.2	1700	●	
14	CL-JLRX/T-570/65-6	29.35	1700	●	
15	CL-JLRX/T-630/55-6	30.5	1700	●	
16	CL-JLRX/T-630/70-6	30.9	1800	●	

21/ 预绞式耐热型悬垂线夹（单导线）

产品图样



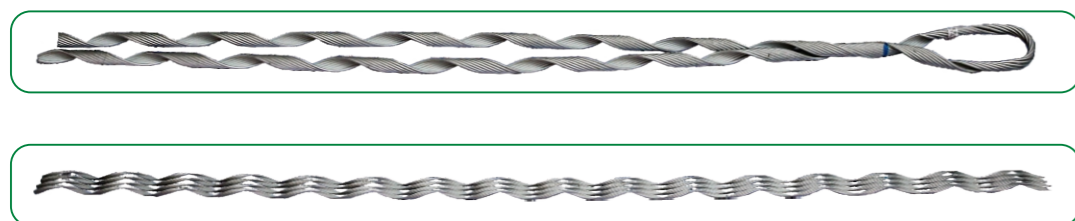
产品参数表

序号	规格型号	适用导线(mm)	预绞丝长度(mm)	悬挂头附件	色标	破坏载荷(KN)
1	CL-JLRX/T-120/25	14.0	1400	硅橡胶衬垫	●	70
2	CL-JLRX/T-150/30	15.6	1400		●	
3	CL-JLRX/T-185/30	17.1	1400		●	
4	CL-JLRX/T-200/30	17.7	1400		●	
5	CL-JLRX/T-240/30	19.1	1500		●	
6	CL-JLRX/T-300/40	21.5	1700		●	
7	CL-JLRX/T-360/40	23.3	1700		●	90
8	CL-JLRX/T-400/50	24.8	1750		●	
9	CL-JLRX/T-450/50	26.1	2100		●	
10	CL-JLRX/T-500/50	27.4	2200		●	
11	CL-JLRX/T-500/55	27.6	2200		●	111
12	CL-JLRX/T-560/55	29.0	2200		●	
13	CL-JLRX/T-560/55	29.2	2200		●	
14	CL-JLRX/T-570/65	29.35	2200		●	
15	CL-JLRX/T-630/55	30.5	2300		●	
16	CL-JLRX/T-630/70	30.9	2300		●	



22/紧线用预绞式耐张线夹

产品图样



产品参数表

序号	规格型号	适用导线(mm)	内层长度(mm)	外层长度(mm)	色标
1	NL-JLRX/T-120/25	14.0	2600	2000	●
2	NL-JLRX/T-150/30	15.6			●
3	NL-JLRX/T-185/30	17.1			●
4	NL-JLRX/T-200/30	17.7			●
5	NL-JLRX/T-240/30	19.1			●
6	NL-JLRX/T-300/40	21.5			●
7	NL-JLRX/T-360/40	23.3			●
8	NL-JLRX/T-400/50	24.8			●
9	NL-JLRX/T-450/50	26.1			●
10	NL-JLRX/T-500/50	27.4			●
11	NL-JLRX/T-500/55	27.6			●
12	NL-JLRX/T-560/55	29.0			●
13	NL-JLRX/T-560/65	29.2			●
14	NL-JLRX/T-570/65	29.35			●
15	NL-JLRX/T-630/55	30.5			●
16	NL-JLRX/T-630/70	30.9			●



紧线用加长型预绞式耐张线夹/23

加长型产品参数表

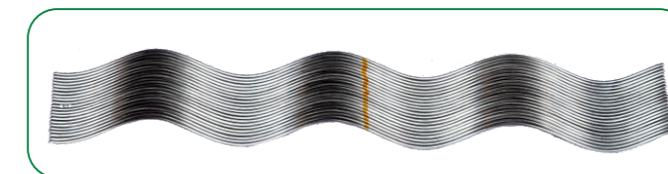
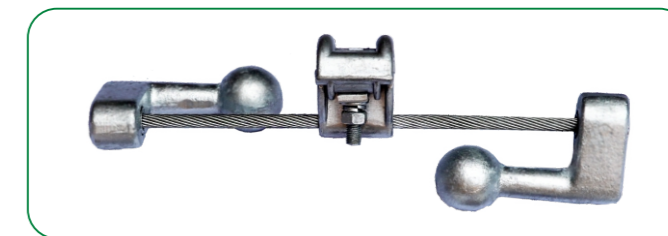
序号	规格型号	适用导线(mm)	内层长度(mm)	外层长度(mm)	色标
1	NL-JLRX/T-300/40	21.5	3000	2500	●
2	NL-JLRX/T-360/40	23.3			●
3	NL-JLRX/T-400/50	24.8			●
4	NL-JLRX/T-450/50	26.1			●
5	NL-JLRX/T-500/50	27.4			●
6	NL-JLRX/T-500/55	27.6			●
7	NL-JLRX/T-560/55	29.0			●
8	NL-JLRX/T-560/65	29.2			●
9	NL-JLRX/T-570/65	29.35			●
10	NL-JLRX/T-630/55	30.5			●
11	NL-JLRX/T-630/70	30.9			●





耐热型防震锤/24

产品图样

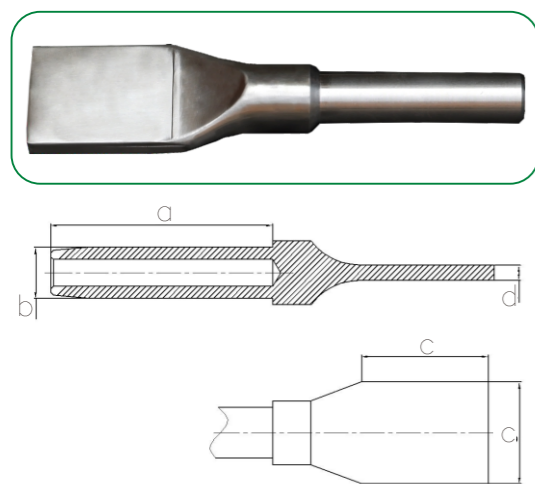


产品参数表

序号	规格型号	适用导线(mm)	护线条长度(mm)	色标	吊线和线夹的握力
1	FDZ-JLRX/T-120/25	14.0	500	●	≥2.5KN/1min
2	FDZ-JLRX/T-150/30	15.6	500	●	
3	FDZ-JLRX/T-185/30	17.1	500	●	
4	FDZ-JLRX/T-200/30	17.7	500	●	
5	FDZ-JLRX/T-240/30	19.1	550	●	
6	FDZ-JLRX/T-300/40	21.5	550	●	
7	FDZ-JLRX/T-360/40	23.3	550	●	
8	FDZ-JLRX/T-400/50	24.8	600	●	
9	FDZ-JLRX/T-450/50	26.1	600	●	
10	FDZ-JLRX/T-500/50	27.4	600	●	
11	FDZ-JLRX/T-500/55	27.6	600	●	
12	FDZ-JLRX/T-560/55	29.0	600	●	
13	FDZ-JLRX/T-560/65	29.2	600	●	
14	FDZ-JLRX/T-570/65	29.35	600	●	
15	FDZ-JLRX/T-630/55	30.5	600	●	
16	FDZ-JLRX/T-630/70	30.9	600	●	

25/ 耐热型设备线夹

产品图样

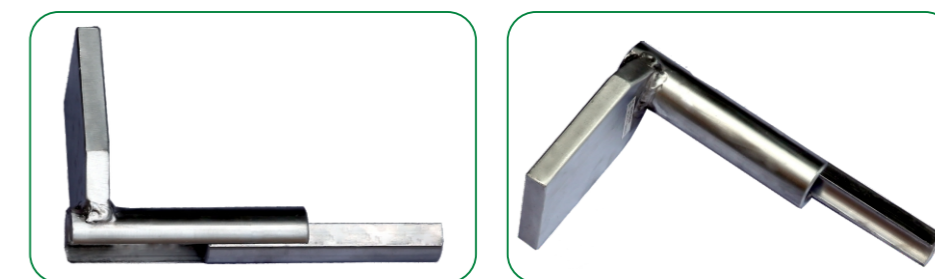


产品参数表

序号	规格型号	适用导线(mm)	压接管长度(mm)	压接管外径(mm)	面板尺寸(mm)	面板厚度(mm)
			a	b	c	d
1	SY-JLRX/T-120/25N	14.0	155	36	100 × 80	12
2	SY-JLRX/T-150/30N	15.6	155	36	100 × 80	12
3	SY-JLRX/T-185/30N	17.1	155	36	100 × 80	12
4	SY-JLRX/T-200/30N	17.7	155	36	100 × 80	16
5	SY-JLRX/T-240/30N	19.1	155	36	100 × 80	16
6	SY-JLRX/T-300/40N	21.5	170	45	100 × 80	16
7	SY-JLRX/T-360/40N	23.3	170	45	100 × 80	16
8	SY-JLRX/T-400/50N	24.8	200	48	100 × 100	20
9	SY-JLRX/T-450/50N	26.1	200	48	100 × 100	20
10	SY-JLRX/T-500/50N	27.4	200	60	100 × 100	20
11	SY-JLRX/T-500/55N	27.6	200	60	100 × 100	20
12	SY-JLRX/T-560/55N	29.0	200	60	100 × 100	20
13	SY-JLRX/T-560/65N	29.2	200	60	100 × 100	20
14	SY-JLRX/T-570/65N	29.35	200	60	100 × 100	22
15	SY-JLRX/T-630/55N	30.5	200	60	100 × 100	22
16	SY-JLRX/T-630/70N	30.9	200	60	100 × 100	22

耐热型T型线夹/26

产品图样



产品参数表

序号	规格型号	适用导线(mm)	压接管长度(mm)	压接管外径(mm)	面板尺寸(mm)	面板厚度(mm)
1	TY-JLRX/T-120/25N	14.0	155	36	100 × 80	12
2	TY-JLRX/T-150/30N	15.6	155	36	100 × 80	12
3	TY-JLRX/T-185/30N	17.1	155	36	100 × 80	12
4	TY-JLRX/T-200/30N	17.7	155	36	100 × 80	16
5	TY-JLRX/T-240/30N	19.1	155	36	100 × 80	16
6	TY-JLRX/T-300/40N	21.5	185	45	100 × 80	16
7	TY-JLRX/T-360/40N	23.3	185	45	100 × 80	16
8	TY-JLRX/T-400/50N	24.8	200	48	100 × 100	20
9	TY-JLRX/T-450/50N	26.1	200	48	100 × 100	20
10	TY-JLRX/T-500/50N	27.4	200	60	100 × 100	20
11	TY-JLRX/T-500/55N	27.6	200	60	100 × 100	20
12	TY-JLRX/T-560/55N	29.0	200	60	100 × 100	20
13	TY-JLRX/T-560/65N	29.2	200	60	100 × 100	20
14	TY-JLRX/T-570/65N	29.4	200	60	100 × 100	22
15	TY-JLRX/T-630/55N	30.5	200	60	100 × 100	22
16	TY-JLRX/T-630/70N	30.9	200	60	100 × 100	22



GuhuaElectrical

GuhuaElectrical



Market

by specialisation

