

EHGR Series

● DESCRIPTION

High pressure filter

Connection type and size:

Side panel connection: 1½"

Maximum flow rate up to 910 l/min

● TECHNICAL PARAMETER

Maximum working pressure: 414 bar

Bypass valve opening pressure: 3.4 bar

Transmitter opening pressure: 2.4 bar

Temperature range: -29 to +120

● MATERIALS

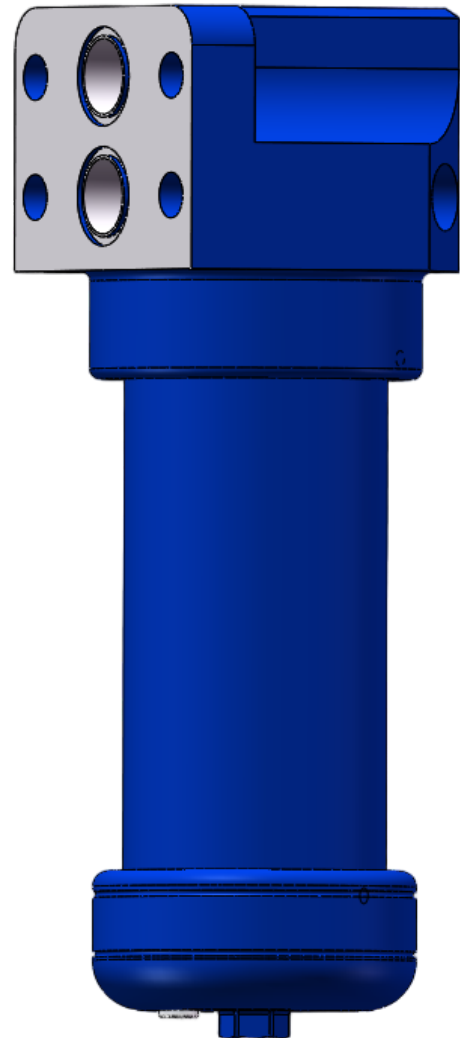
Head: Carbon steel

Filter bowl: Carbon steel

Seals: NBR nitrile rubber (standard)

Or FKM fluororubber (customizable)

Filter element material: Fiberglass



● MEDIA COMPATIBILITY

Suitable for mineral oil, lubricating oil, fire-resistant oil, and rapidly biodegradable media.
(If used for water-based or special media, please consult our sales department.)

Ordering Options Table

EHGR 9900 S24 26 12 N B B

Filter type

Filter specification

9900 9901

Connection type and size

Type	Connection	Filter size		
		13	26	39
S24	Side panel 1½"	●	●	●

Filter element length

13" 26" 39"

Filter fineness(μm)

3 5 7 12 22

Seals

N: NBR V: FKM

Bypass valve opening pressure

B = 3.4 bar

N = Withoutbypass valve

Differential pressure transmitter

A: Steel blanking plug in indicator port

EB: Visual (Automatic reset)

E: Visual (Manual reset)

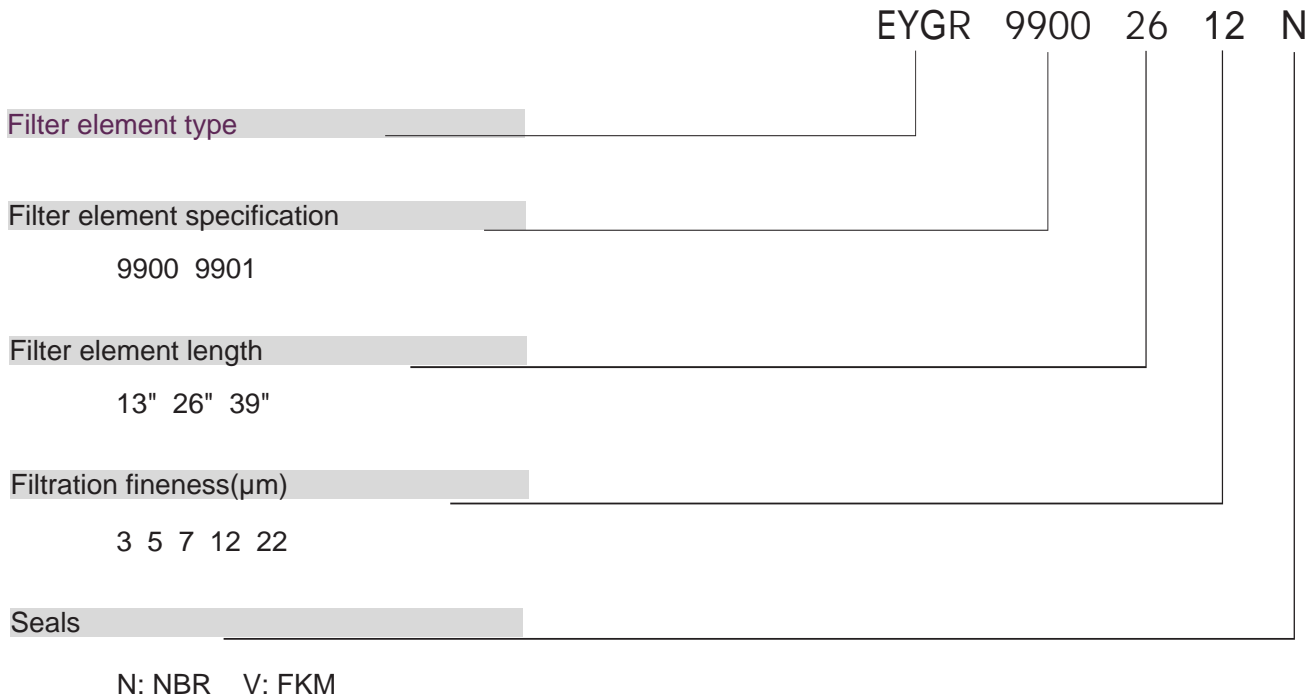
R: Electrical indicator

RL: Visual and electrical indicators

M: Electrical indicator

ML: Visual and electrical indicators

Filter Element

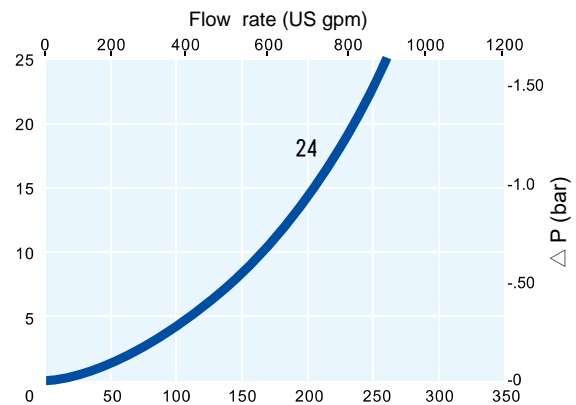


Maintenance Instructions

Filter housing must be grounded
 When using electric plugging, please replace the filter element.
 The system must be turned off before removing the clogging indicator light and power connector.

Differential pressure information

Differential pressure of filter housing with a fluid specific gravity of 0.9.
 Housing pressure drop is directly proportional to specific gravity.



Filter element pressure difference

The actual flow rate is multiplied by the coefficient to obtain a filtration viscosity of 32 cSt (150 SUS). The specific gravity is 0.9. The pressure difference of the filter element when the fluid is flowing.

Note: The flow rate of the coefficient values in the table is 1000 l/min or 1 US gpm.

9900-9901 Series Filter Elements —bar/1000 l/min (psid/US gpm)

Length	3	5	7	12	22
13	3.51	1.66	1.29	0.92	0.74
26	1.66	0.92	0.74	0.55	0.37
39	1.11	0.55	0.27	0.37	0.18

DIMENSIONS

