

DHGK Series

DESCRIPTION

High pressure filter

Connection type and size:

M22x1.5 G $\frac{1}{2}$ " M22x1.5 G $\frac{3}{4}$ "

Maximum flow rate up to 100 l/min

TECHNICAL PARAMETER

Maximum working pressure: 280 bar

Bypass valve opening pressure: 7 bar

Transmitter alarm pressure: 5 bar

Temperature range: -29 to +120



MATERIALS

Head: Cast iron

Filter bowl: Carbon steel

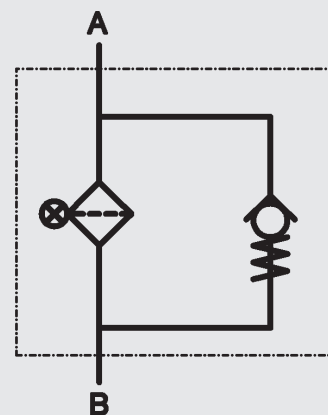
Seals: NBR nitrile rubber (standard)

Or FKM fluororubber (customizable)

Filter element material:

Fiberglass and wire mesh

Symbol for hydraulic systems



MEDIA COMPATIBILITY

Suitable for mineral oil, lubricating oil, fire-resistant oil, and rapidly biodegradable media.
(If used for water-based or special media, please consult our sales department.)

Ordering Options Table

DH GK 75 D F 10 N 4 W B7

Filter model

Filter specification

35 55 75 95

Connection type and size

Type	Connection	Filter size			
		35	55	75	95
A	M18 x 1.5	●	●	●	●
B	G 1/2	●	●	●	●
D	M22 x 1.5	●	●	●	●
H	G 3/4	●	●	●	●

Filter element material

F: Fiberglass

W: Stainless steel wire mesh

Filter finess(μm)

(F): 03 05 10 20

(W): 05 10 20 30

Seals

N: NBR V: FKM

Mounting type

Clogging indicator port on side of head - 3 mounting holes

Clogging indicator port on top of head - 4 mounting holes

Differential pressure transmitter

A: Steel blanking plug in indicator port

B: Visual (Automatic reset)

BM: Visual (Manual reset)

C: Electrical indicator

CM: Visual and electrical indicators

CL: Visual and electrical indicators

D: Electrical indicator

DM: Electrical indicator Plug DT 04-2P

Bypass valve opening pressure

B0 = Without bypass valve

B7 = 7 bar

Filter Element

DY GK 75 F 10 N

Filter element type

Filter element specification

35 55 75 95

Filter element material

F: Fiberglass W: Stainless steel wire mesh

Filtration Fineness(μm)

(F): 03 05 10 20 (W): 05 10 20 30

Seals

N: NBR V: FKM

Maintenance Instructions

Filter housing must be grounded

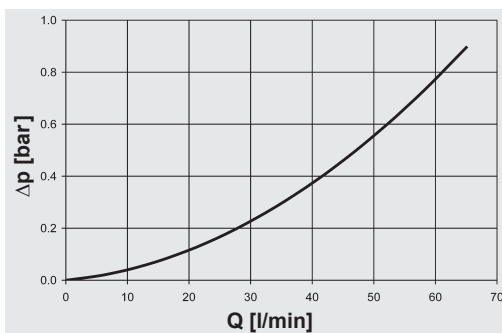
When using electric plugging, please replace the filter element.

The system must be turned off before removing the clog indicator light and power connector.

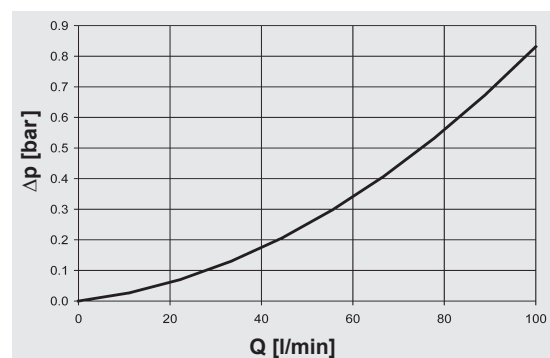
Δp -Q ISO 3968

The housing curves apply to mineral oil with a density of 0.86kg/dm^3 and a kinematic viscosity of $30\text{mm}^2/\text{s}$. In this case, the differential pressure changes proportionally to the density.

DHGK - Port M18 x 1.5 / G 1/2

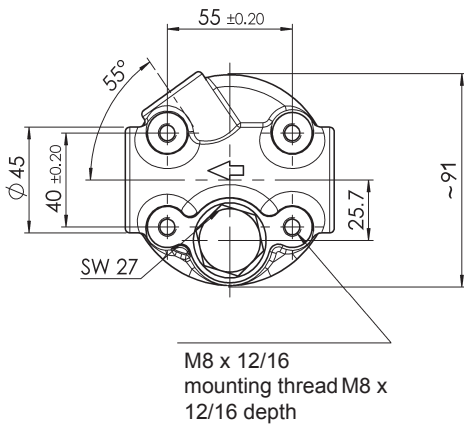
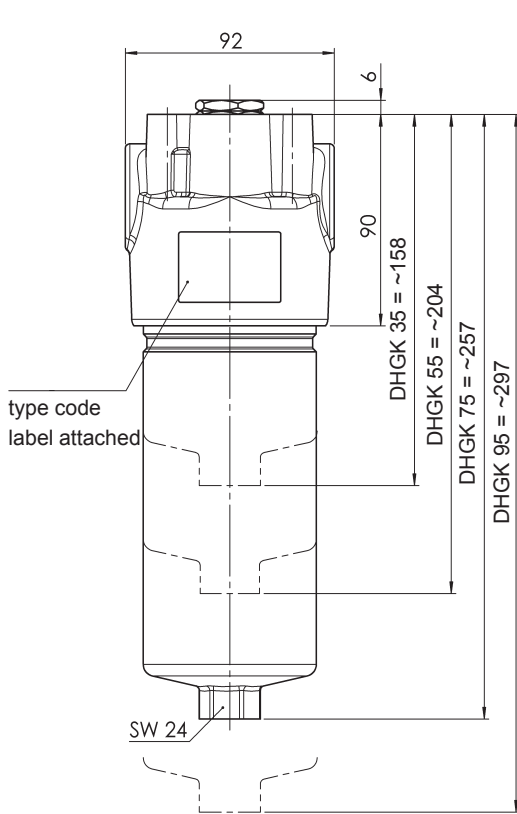


DHGK - Port M22 x 1.5 / G 3/4

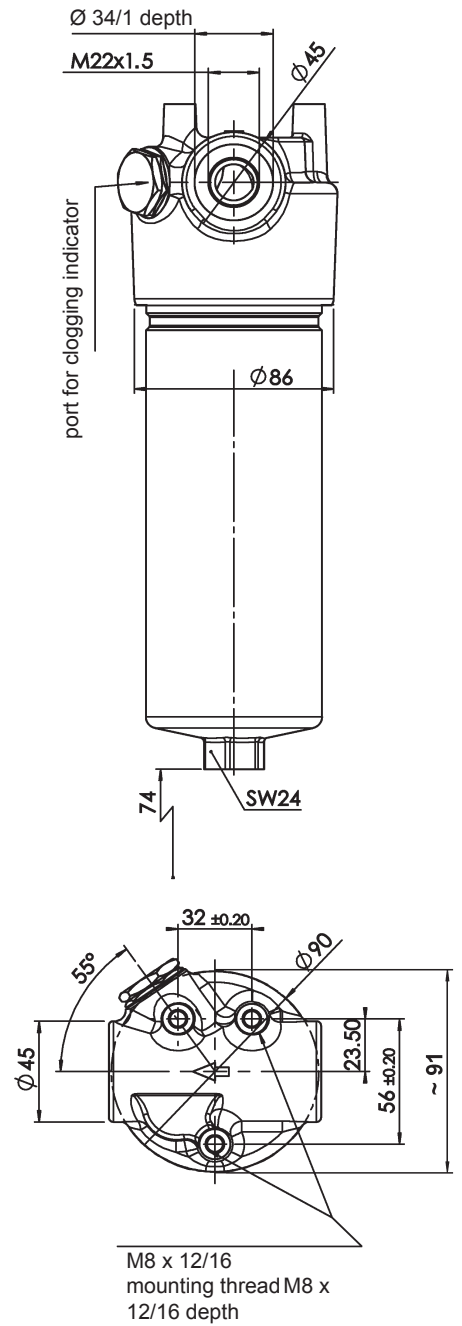
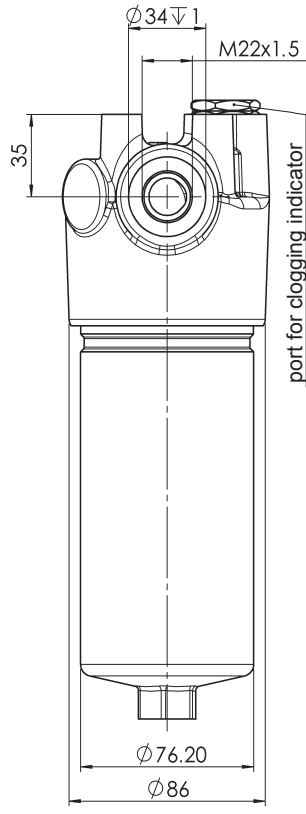


DIMENSIONS

STANDARDVERSION 4



SPECIAL VERSION 3



Annotation

All information in this manual relates to the described working environment and application conditions. For applications and working conditions that are not described, please contact the relevant technical department. Technical modifications are possible.

DHGK	Weight [kg]	Vol. of pressure chamber [l]0.24
35	3.7	
55	4.2	0.39
75	4.7	0.56
95	5.1	0.69