

DHSW Series

● DESCRIPTION

Duplex bowls high pressure filter

Connection type and size:

Threaded connection: G $\frac{1}{2}$ " G $\frac{3}{4}$ " G1" G1 $\frac{1}{4}$ " G1 $\frac{1}{2}$ "

SAE Flange connection: DN25 DN38

Maximum flow rate up to 400 l/min

● TECHNICAL PARAMETER

Maximum working pressure: 315 bar

Bypass valve opening pressure: 7 bar

Transmitter opening pressure: 5 bar

Temperature range: -10 to +100



● MATERIALS

Head: Cast iron

Filter bowl: Carbon steel

Seals: NBR nitrile rubber (standard)

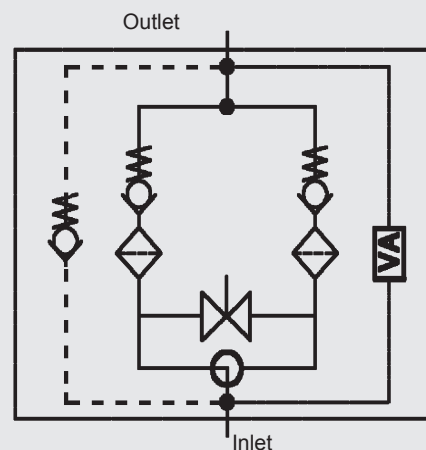
Or FKM fluororubber (customizable)

Filter element material: Fiberglass and wire mesh

● MEDIA COMPATIBILITY

Suitable for mineral oil, lubricating oil, fire-resistant oil, and rapidly biodegradable media.
(If used for water-based or special media, please consult our sales department.)

Symbol for hydraulic systems



VA = clogging indicator

Ordering Options Table

DHSW 250 F F 10 N B B7

Filter type

Filter specification

60、110、140、40、63、100、160、250、400

Connection type and size

Type	Connection	Filter size								
		60	110	140	40	63	100	160	250	400
B	G 1/2	X	X	X	●	X	X			
C	G 3/4	X	X	X	X	●	X			
D	G 1	X	X	X	X	X	●			
E	G 1 1/4							●	X	X
F	G 1 1/2							X	●	X
I	DN 25**	X	X	X	X	X	X			
K	DN 38**							X	X	●

** Flange SAE, 3000 PSI

Filter element material

F: Fiberglass

W: Stainless steel wire mesh

Filter fineness(μm)

(F): 03 05 10 20

(W): 05 10 20 30

Seals

N: NBR V: FKM

Differential pressure transmitter

A: Steel blanking plug in indicator port

B: Visual (Automatic reset)

BM: Visual (Manual reset)

C: Electrical indicator

CM: Visual and electrical indicators

CL: Visual and electrical indicators

D: Electrical indicator

DM: Electrical indicator Plug DT 04-2P

Bypass valve opening pressure

B0 = Without bypass valve

B7 = 7 bar



Filter Element

DYSW 250 F 10 N

Filter element type

Filter element specification

60 110 140 40 63 100 60 250 400

Filter element material

F: Fiberglass W: Stainless steel wire mesh

Filter fineness(μm)

(F): 03 05 10 20 30 (W): 05 10 20 30

Seals

N: NBR V: FKM

Maintenance Instructions

Filter housing must be grounded

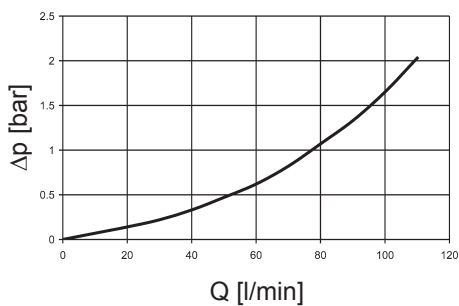
When using electric plugging, please replace the filter element.

The system must be turned off before removing the clog indicator light and power connector.

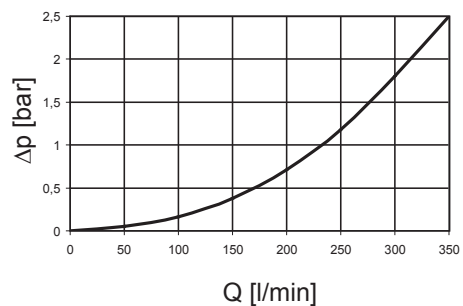
Δp-Q ISO 3968

The housing curves apply to mineral oil with a density of 0.86 kg/dm³ and a kinematic viscosity of 30 mm²/s. In this case, the differential pressure changes proportionally to the density.

DHSW 40 60 63 100 110 140

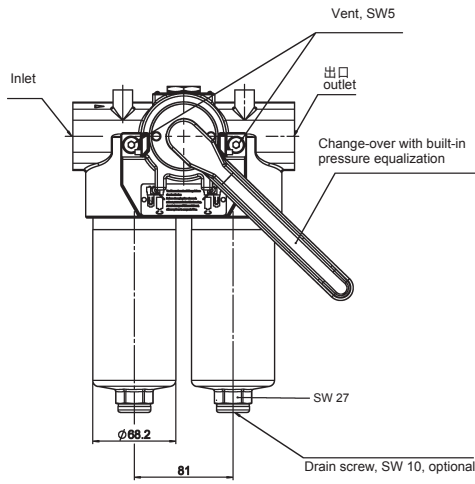


DHSW 160 250 400

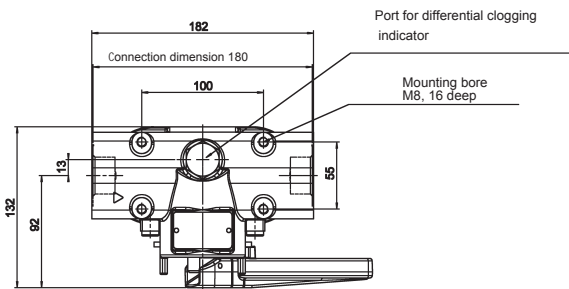
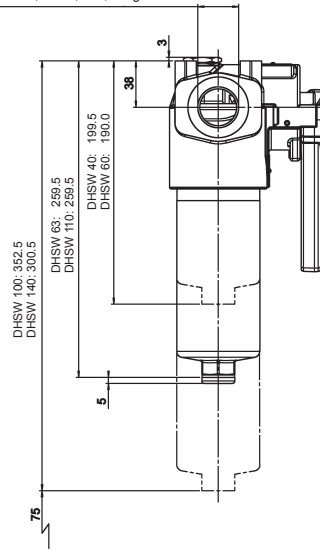


DIMENSIONS

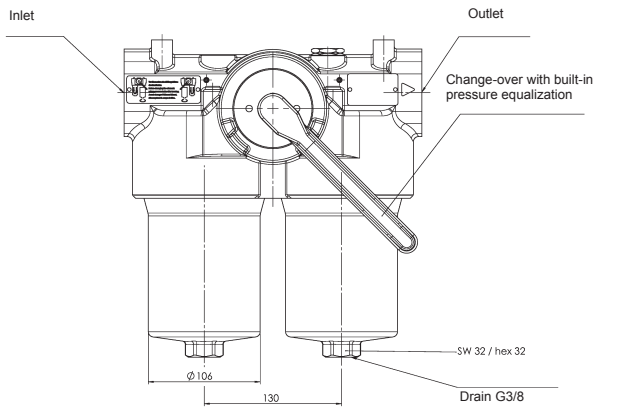
DHSW 40 - 140



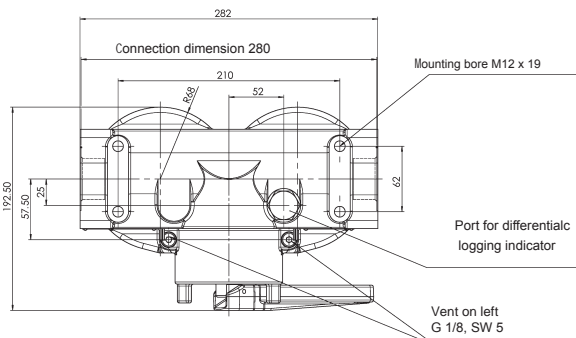
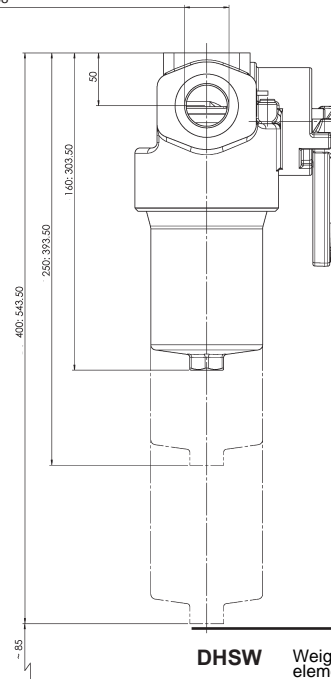
Optional G 1/2, G 3/4, G 1, flange DN 25



DHSW 160 - 400



Optional G11/4 , G11/2, fange DN38



DHSW	Weight incl. element [kg]	Pressure chamber volume [l]
40	9.2	2x 0.22
60	9.2	2x 0.20
63	10.5	2x 0.33
100	11.5	2x 0.50
110	10.8	2x 0.33
140	12.0	2x 0.40
160	23.9	2x 1.10
250	27.1	2x 1.70
400	32.2	2x 2.70