

## EHSZ Series

### ● DESCRIPTION

Duplex-bowl high-pressure filter  
 Connection type and size:  
 Threaded connection: G1½"  
 SAE Flange connectio: 1-1/2"  
 Maximum flow rate up to 500 l/min

### ● TECHNICAL PARAMETER

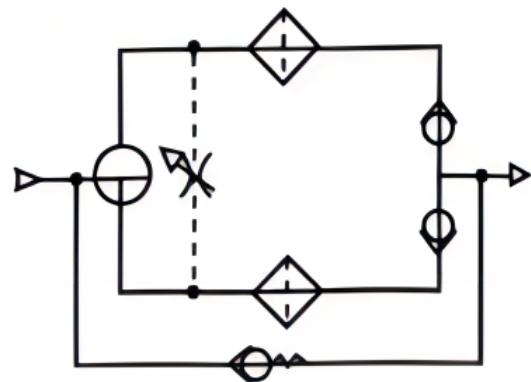
Maximum working pressure: 450 bar  
 Bypass valve opening pressure: 3.4, 6 bar  
 Transmitter opening pressure: 2.4, 5 bar  
 Temperature range: -29 to +120

### ● MATERIALS

Head: Cast iron  
 Filter bowl: Carbon steel  
 Seals: NBR nitrile rubber (standard)  
 FKM fluororubber (customizable)  
 Filter element material: Fiberglass

### ● MEDIA COMPATIBILITY

Suitable for mineral oil, lubricating oil, fire-resistant oil, and rapidly biodegradable media.  
 (If used for water-based or special media, please consult our sales department.)



## Ordering Options Table

EHSZ 4740 G24 T 12 N B3 D

Filter type

Filter specification

Filter element option

Type	Filter element mode	Crushing pressure difference (bar)
4	4704	10
0	9600	20
1	9601	210

Connection type and size

Type	Connection
G24	1 -1/2"

Filter element length

Type	Filter element length
S	08
T	13
U	16

Filter fineness(μm)

3 5 7 12 22

Seals

N: NBR V: FKM

Bypass valve opening pressure

B = 3.4 bar

I = 6 bar

N = Without bypass valve

Differential pressure transmitter

- A: Steel blanking plug in indicator port
- EB: Visual (Automatic reset )
- E: Visual (Manual reset )
- R: Electrical indicator
- RL: Visual and electrical indicators
- M: Electrical indicator
- ML: Visual and electrical indicators



# Filter Element

EYSZ 4704 13 12 N

Filter element type

Filter element specification

### Filter element option

Type	Filter element model	Crushing pressure difference (bar)
4	4704	10
0	9600	20
1	9601	210

Filter element length

08" 13" 16"

Filter fineness(μm)

3 5 7 12 22

Seals

N: NBR V: FKM

### Maintenance Instructions

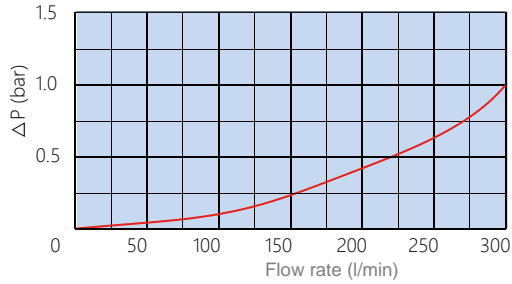
Filter housing must be grounded

When using electric plugging, please replace the filter element.

The system must be turned off before removing the clogging indicator light and power connector.

### Differential pressure information

Differential pressure of filter housing with a fluid specific gravity of 0.9.  
Housing pressure drop is directly proportional to specific gravity.



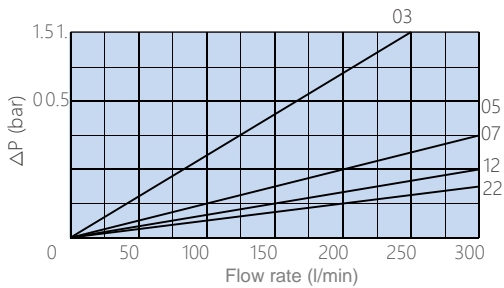
9601 Initial parameter of differential pressure bar/1000L PM			
Filter element length (inch)	Filter fineness(μm)		
	05	12	22
08	8.49	5.20	3.41
13	5.01	3.40	2.05
16	3.87	2.70	1.55

### Filter element pressure difference

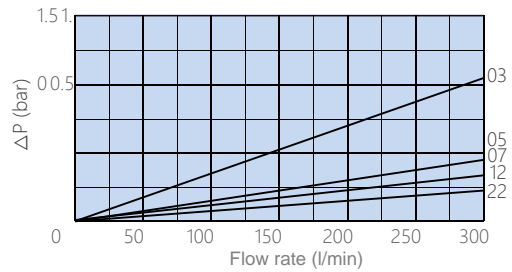
The actual flow rate is multiplied by the coefficient to obtain a filtration viscosity of 32 cSt (150 SUS).  
The specific gravity is 0.9. The pressure difference of the filter element when the fluid is flowing.

Note: The flow rate of the coefficient values in the table is 1000 l/min or 1 US gpm.

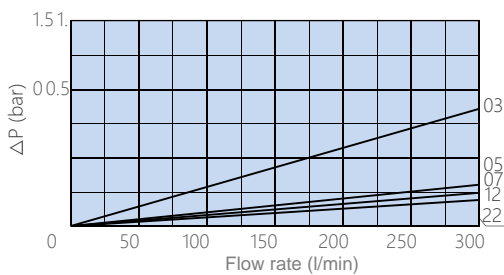
Service 8" filter element



Service 13" filter element



Service 16" filter element



# DIMENSIONS

