

EHSY Series

● DESCRIPTION

Duplex bowls return filter

Connection type and size:

SAE Flange connection: 3"

Maximum flow rate up to 1200 l/min

● TECHNICAL PARAMETER

Maximum working pressure: 28 bar

Bypass valve opening pressure: 3.4 bar

Transmitter opening pressure : 2.4 bar

Temperature range: -29 to +120

● MATERIALS

Head: Cast aluminium

Filter bowl: Aluminum alloy

Seals: NBR nitrile rubber (standard)

FKM fluororubber (customizable)

Filter element material: Fiberglass



● MEDIA COMPATIBILITY

Suitable for mineral oil, lubricating oil, fire-resistant oil, and rapidly biodegradable media.
(If used for water-based or special media, please consult our sales department.)

Ordering Options Table

	EHSY	8370	F48	X	12	N	B	C						
Filter type														
Filter specification														
Connection type and size														
	<table border="1"> <thead> <tr> <th>Type</th> <th>Connection</th> </tr> </thead> <tbody> <tr> <td>F48</td> <td>3"</td> </tr> </tbody> </table>								Type	Connection	F48	3"		
Type	Connection													
F48	3"													
Filter element length														
	<table border="1"> <thead> <tr> <th>Type</th> <th>Filter element length</th> </tr> </thead> <tbody> <tr> <td>U</td> <td>16</td> </tr> <tr> <td>X</td> <td>39</td> </tr> </tbody> </table>								Type	Filter element length	U	16	X	39
Type	Filter element length													
U	16													
X	39													
Filter fineness(μm)														
	3 5 7 12 22													
Seals														
	N: NBR V: FKM													
Bypass valve opening pressure														
	B = 3.4 bar N = Without bypass valve													
Differential pressure transmitter														

- A: Steel blanking plug in indicator port
- EB: Visual (Automatic reset)
- E: Visual (Manual reset)
- R: Electrical indicator
- RL: Visual and electrical indicators
- M: Electrical indicator
- ML: Visual and electrical indicators

Filter Element

EYSY 8370 39 12 N

Filter element type

Filter element specification

Filter element length
16" 39"

Filtration fineness(μm)
3 5 7 12 22

Seals
N: NBR V: FKM

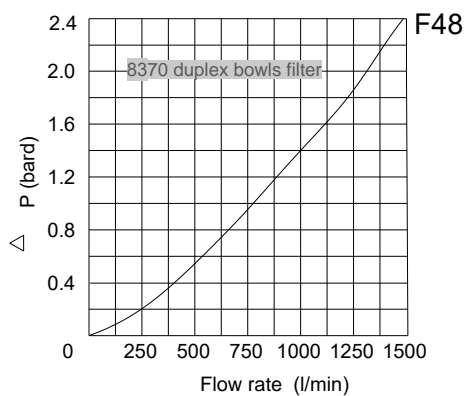
Huayu E

Maintenance Instructions

Filter housing must be grounded
 When using electric plugging, please replace the filter element.
 The system must be turned off before removing the clogging indicator light and power connector.

Differential pressure information

Differential pressure of filter housing with a fluid specific gravity of 0.9
 Housing pressure drop is directly proportional to specific gravity.



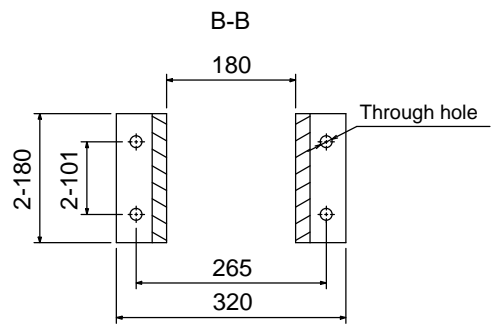
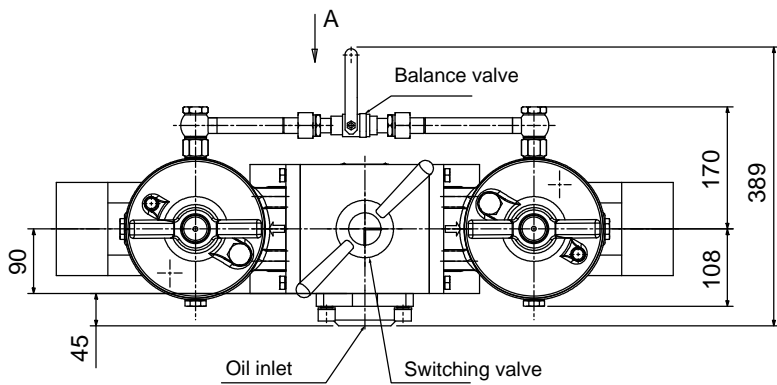
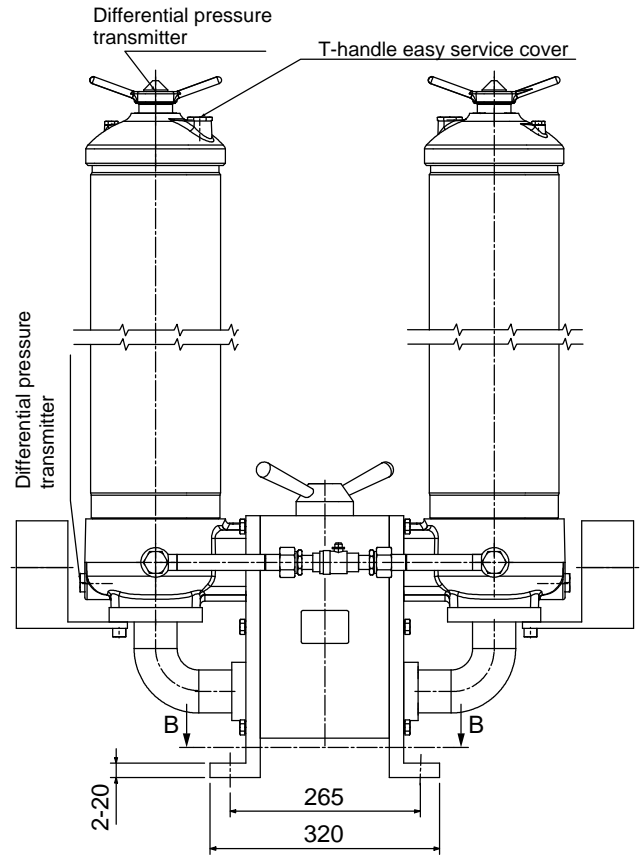
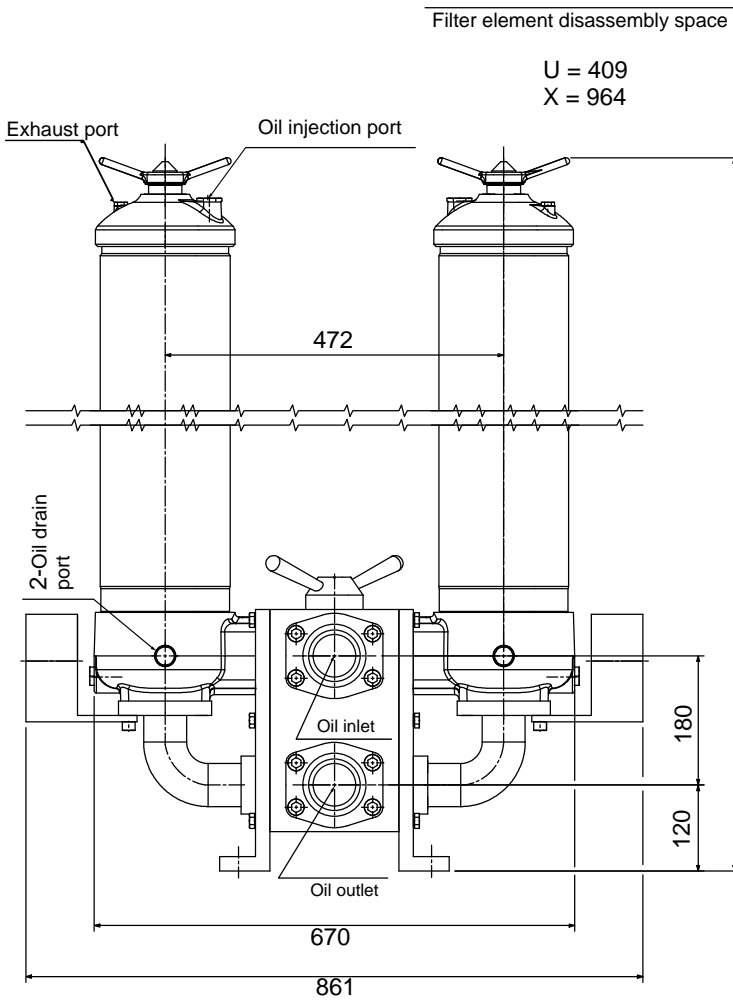
Filter element pressure difference

The actual flow rate is multiplied by the coefficient to obtain a filtration viscosity of 32 cSt (150 SUS). The specific gravity is 0.9. The pressure difference of the filter element when the fluid is flowing.

Note: The flow rate of the coefficient values in the table is 1000 l/min or 1 US gpm.

Length	3	5	7	12	22
16"	1.84	0.89	0.75	0.56	0.40
39"	0.69	0.33	0.27	0.22	0.15

DIMENSIONS



8370
Schematic diagram of dual filter

