

DHSU Series

DESCRIPTION

Duplex bowls line filter

Connection type and size:

Threaded connection: G1" G1½"

SAE Flange connection: DN25 DN40 DN50 DN65 DN80 DN100

DIN Flange connection: DN80 DN100

Switch type: Stainless steel balls

Maximum flow rate up to 2500 l/min

TECHNICAL PARAMETER

Maximum working pressure: 25 bar

Bypass valve opening pressure: 3bar

Transmitter opening pressure: 2 bar

Temperature range: -10 to +100

MATERIALS

Head: Cast iron

Filter barrel: Cast iron

Seals: NBR nitrile rubber (standard)

Or FKM fluororubber (customizable)

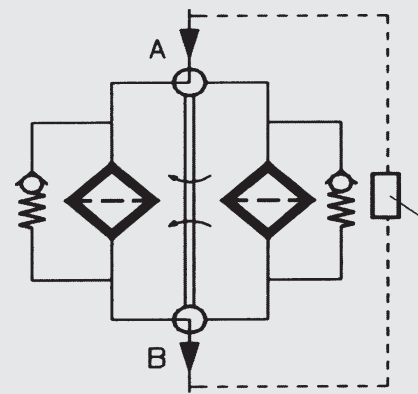
Filter element material: Fiberglass and wire mesh

MEDIA COMPATIBILITY

Suitable for mineral oil, lubricating oil, fire-resistant oil, and rapidly biodegradable media.
(If used for water-based or special media, please consult our sales department.)



Symbol for hydraulic systems



Differential pressure indicator

Ordering Options Table

DHSU 661 L F 10 N D B2

Filter model

Filter specification

111 241 261 331 501 661 851 951 1301 1321

Connection type and size

Type	Connection port	Filter size									
		111	241	261	331	501	661	851	951	1301	1321
D	G 1	●									
F	G 1½		●	●							
I	SAE DN 25	●									
K	SAE DN 40		●	●	●	●					
L	SAE DN 50				●	●	●	●			
M	SAE DN 65						●	●			
S	SAE/DIN DN 80						●	●	●	●	●
T	SAE/DIN DN100								●	●	●

Filter element material

F: Fiberglass

W: Stainless steel wire mesh

Filter fineness(μm)

(F): 03 05 10 20

(W): 05 10 20 20

Seals

N: NBR V: FKM

Differential pressure transmitter

A: Steel blanking plug in indicator port

B: Visual (Automatic reset)

BM: Visual (Manual reset)

C: Electrical indicator

CM: Visual and electrical indicators

CL: Visual and electrical indicators

D: Electrical indicator

DM: Electrical indicator Plug DT 04-2P

Bypass valve opening pressure

B0 = Withoutbypass valve

B3 = 3 bar



Filter Element

DYSU 660 F 10 N

Filter element type

Filter element specification

110 240 260 330 500 660 850 950 1300 2600

Filter element material

F: Fiberglass W: Stainless steel wire mesh

Filtration fineness(μm)

(F): 03 05 10 20 (W): 05 10 20 30

Seals

N: NBR V: FKM

Maintenance Instructions

Filter housing must be grounded

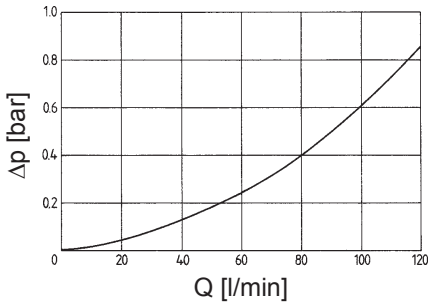
When using electric plugging, please replace the filter element.

The system must be turned off before removing the clogging indicator light and power connector.

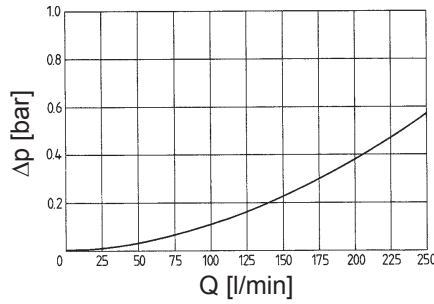
Δp -Q ISO 3968

The housing curves apply to mineral oil with a density of 0.86 kg/dm³ and a kinematic viscosity of 30 mm²/s. In this case, the differential pressure changes proportionally to the density.

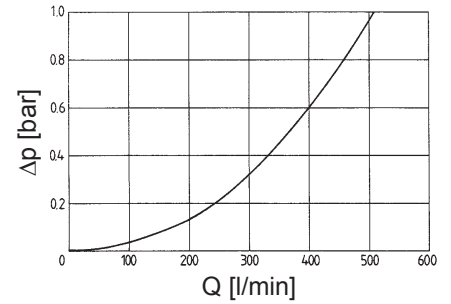
DHSU 111



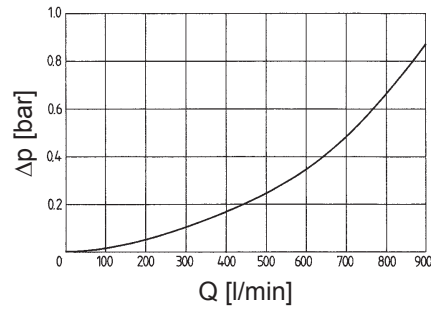
DHSU 241 261



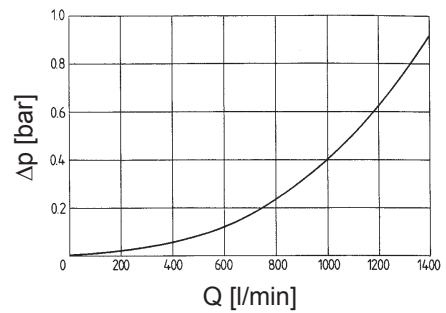
DHSU 331 501



DHSU 661, 851



DHSU 951 1301 1321



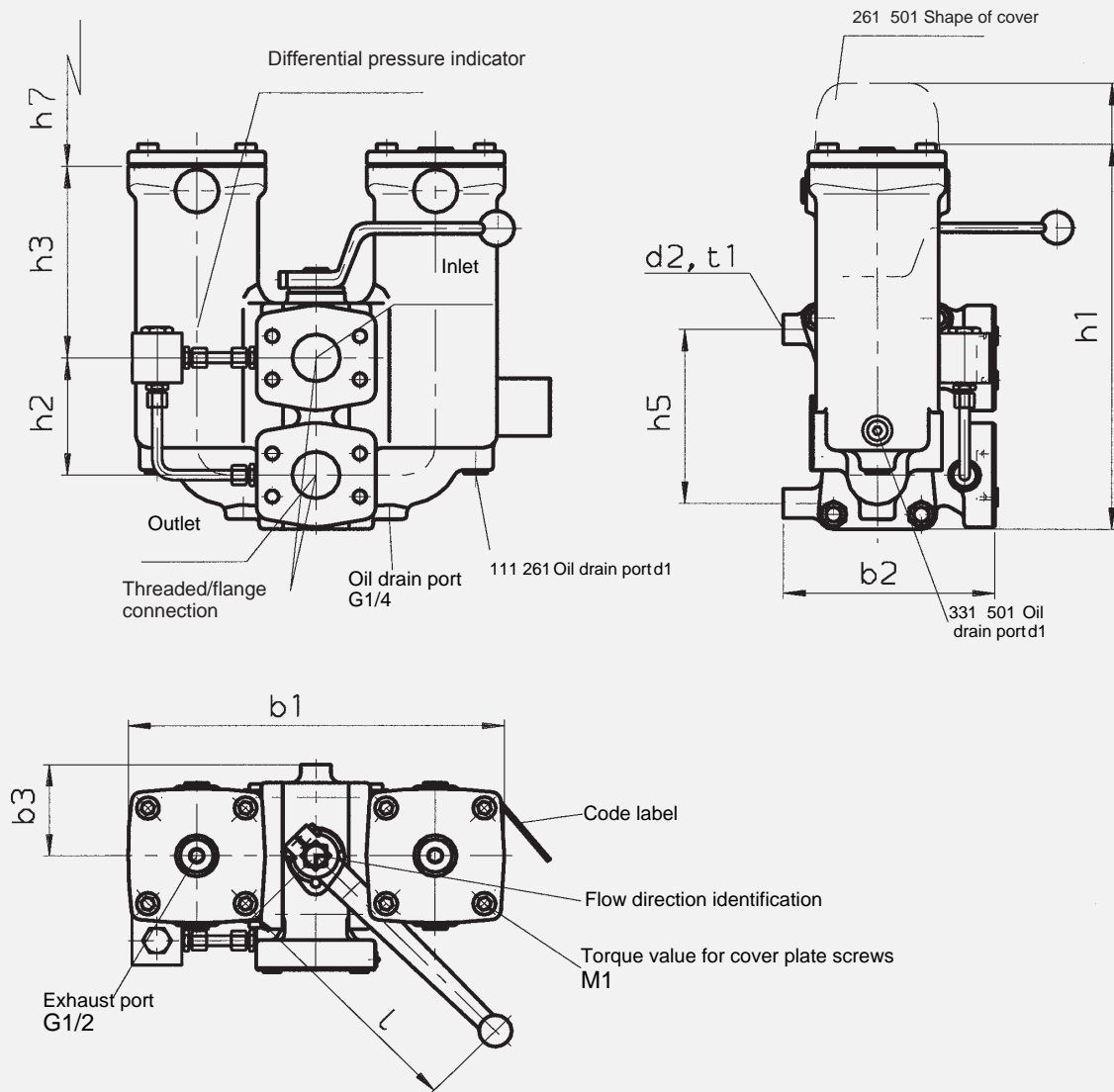
GRADIENT COEFFICIENTS (SK) FOR FILTER ELEMENTS

The gradient coefficients in mbar/(l/min) apply to mineral oils with a kinematic viscosity of 30 mm²/s. The pressure drop changes proportionally to the change in viscosity.

DHSU	F						W
	1 μm	3 μm	5 μm	10 μm	15 μm	20 μm	-
110	22.3	13.1	8.87	5.40	4.26	3.24	0.30
240	10.4	5.18	3.66	2.27	1.84	1.41	0.123
330	8.09	3.72	2.73	1.48	1.28	1.02	0.195
500	5.27	2.60	1.90	1.09	0.84	0.69	0.128
660	3.57	1.69	1.21	0.67	0.57	0.45	0.067
850	2.77	1.31	1.00	0.58	0.44	0.36	0.052
950	2.39	1.03	0.79	0.48	0.38	0.31	0.048
1300	1.72	0.72	0.59	0.35	0.32	0.22	0.034
2600	0.84	0.36	0.29	0.18	0.16	0.11	0.017

DIMENSIONS

DHSU 111 - 501



Huayu D

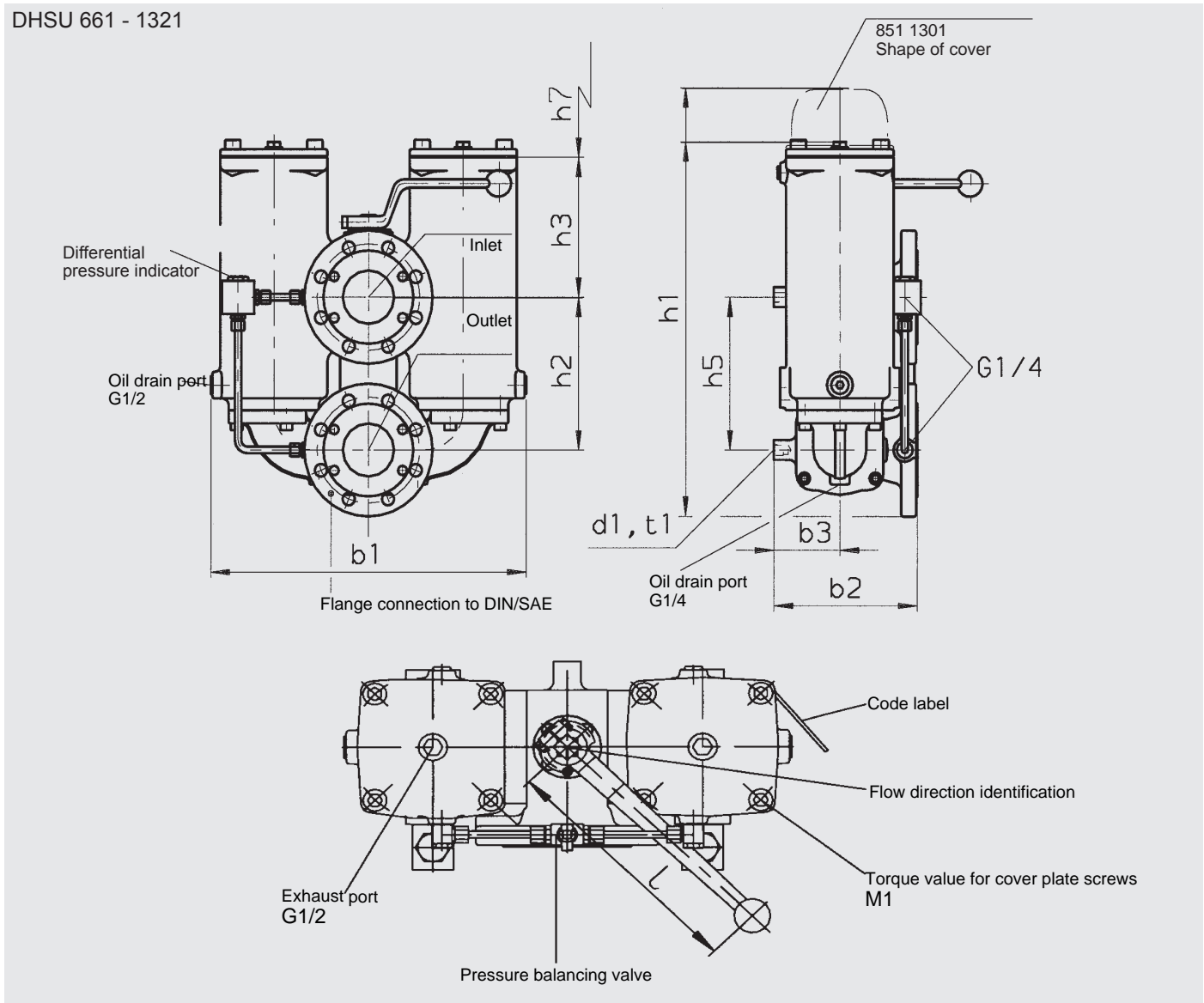
DHSU	Flange connection	Threaded connection	b1	b2	b3	d1	d2	h1	h2	h3	h5	h7	l	M1 (Nm)	t1	Weight [kg]	Vol. of pressure chamber [l]
111	DN 25 (1")	G 1	233	157	63	G ¼	M12	263	80	132	80	175	173	24	25	17	2 x 0.60
241	DN 40 (1½")	G 1½	302	167	75	G ¼	M12	312	95	155	140	210	216	40	18	27	2 x 1.40
261	DN 40 (1½")	G 1½	302	167	75	G ¼	M12	366	95	155	140	270	216	40	18	28	2 x 1.80
331	DN 40 (1½")	-	396	167	75	G ½	M12	302	95	145	140	200	216	40	18	33	2 x 2.30
331	DN 50 (2")	-	380	187	85	G ½	M12	323	110	140	165	200	216	45	18	37	2 x 2.40
501	DN 40 (1½")	-	396	167	75	G ½	M12	382	95	145	140	280	216	45	18	35	2 x 3.00
501	DN 50 (2")	-	380	187	85	G ½	M12	400	110	140	165	280	216	45	18	39	2 x 3.10

Flange connection SAE J 518c (standard pressure range 3000psi)

Threaded connection ISO228 thread

DIMENSIONS

DHSU 661 - 1321



DHSU	Flange connection	b1	b2	b3	d1	h1	h2	h3	h5	h7	l	M1 (Nm)	t1	Weight [kg]	Vol. of pressure chamber [l]
661	DN 50 (2")	496	187	85	M12	460	110	282	165	340	216	150	18	56	2 x 6.80
661	DN 65 (2½")	496	252	85	M12	472	110	282	165	340	216	150	18	74	2 x 6.80
661	DN 80 (3")	490	222	102	M12	566	230	210	230	340	301	150	23	82	2 x 8.20
851	DN 50 (2")	496	187	85	M12	544	110	282	165	420	216	150	18	62	2 x 8.10
851	DN 65 (2½")	496	252	85	M12	556	110	282	165	420	216	150	18	80	2 x 8.10
851	DN 80 (3")	490	222	102	M12	650	230	210	230	420	301	150	23	88	2 x 9.50
951	DN 80 (3")	548	222	102	M12	595	230	243	230	370	301	250	23	105	2 x 10.80
951	DN 100 (4")	555	248	118	M16	640	250	238	250	370	301	250	23	120	2 x 13.00
1301	DN 80 (3")	548	222	102	M12	701	230	243	230	490	301	250	23	110	2 x 13.80
1301	DN 100 (4")	555	248	118	M16	746	250	238	250	490	301	250	23	125	2 x 16.00
1321	DN 80 (3")	548	222	102	M12	1190	230	804	230	950	301	250	23	167	2 x 28.80
1321	DN 100 (4")	555	248	118	M16	1307	250	799	250	950	301	250	23	167	2 x 31.00

Flange connection SAE J518C (Standard pressure series 3000psi); The DIN flange connection complies with DIN EN ISO1092, PN25/40 to DN100

Annotation

All information in this manual relates to the described working environment and application conditions. For applications and working conditions that are not described, please contact the relevant technical department. Technical modifications are possible.