

DHZF Series

● DESCRIPTION

In-line filter

Connection type and size:

Threaded connection: M18x1.5 G $\frac{1}{2}$ " G $\frac{1}{4}$ "

Maximum flow rate up to 280 l/min

● TECHNICAL PARAMETER

Maximum working pressure: 50 bar

Bypass valve opening pressure: 6 bar

Transmitter opening pressure: 5 bar

Temperature range : -30 to +100



● MATERIALS

Head: Cast aluminium

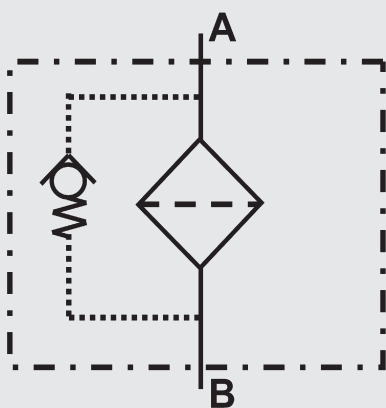
Filter bowl: Aluminium

Seals: NBR nitrile rubber (standard)

Or FKM fluororubber (customizable)

Filter element material: Fiberglass and metal mesh

Symbol for hydraulic systems



● MEDIA COMPATIBILITY

Suitable for mineral oil, lubricating oil, fire-resistant oil, and rapidly biodegradable media.
(If used for water-based or special media, please consult our sales department.)

Ordering Options Table

DHZF 160 D F 10 N N B6

Filter type

Filter specification

35 55 160 240 260 280

Connection type and size

Type	Connection	Filter size					
		35	55	160	240	260	280
A	M18 x 1.5	●	●				
B	G ½	●	●				
E	G 1¼			●	●	●	●

Filter element material

F: Glass fiber

W: Stainless steel wire mesh

Filtration rating(µm)

(F): 03 05 10 20

(W): 05 10 20 30

Seals

N: NBR V: FKM

Differential pressure transmitter

A: Steel blanking plug in indicator port

B: Visual (Automatic reset)

BM: Visual (Manual reset)

C: Electrical indicator

CM: Visual and electrical indicators

CL: Visual and electrical indicators

D: Electrical indicator

DM: Electrical indicator Plug DT 04-2P

Bypass valve opening pressure

B0 = Without bypass valve

B6 = 6 bar

Filter Element

DYZF 160 F 10 N

Filter element type

Filter element specification

35 55 160 240 260 280

Filter element material

F: Fiberglass W: Stainless steel wire mesh

Filtration fineness(μm)

(F): 03 05 10 20 30 (W): 05 10 20 30

Seals

N: NBR V: FKM

Maintenance Instructions

Filter housing must be grounded

When using electric plugging, please replace the filter element.

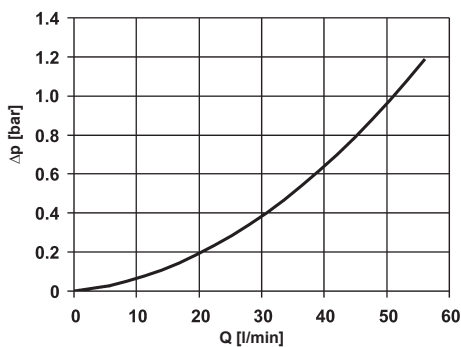
The system must be turned off before removing the clog indicator light and power connector.

Δp -Q ISO 3968

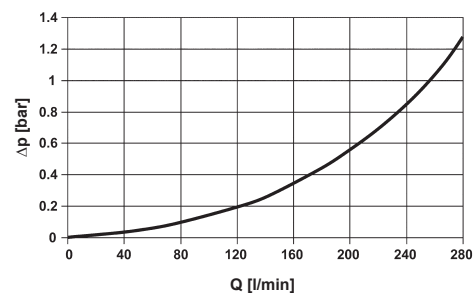
The housing curves apply to mineral oil with a density of 0.86 kg/dm³ and a kinematic viscosity of 30 mm²/s.

In this case, the differential pressure changes proportionally to the density.

DHZF 35、 55

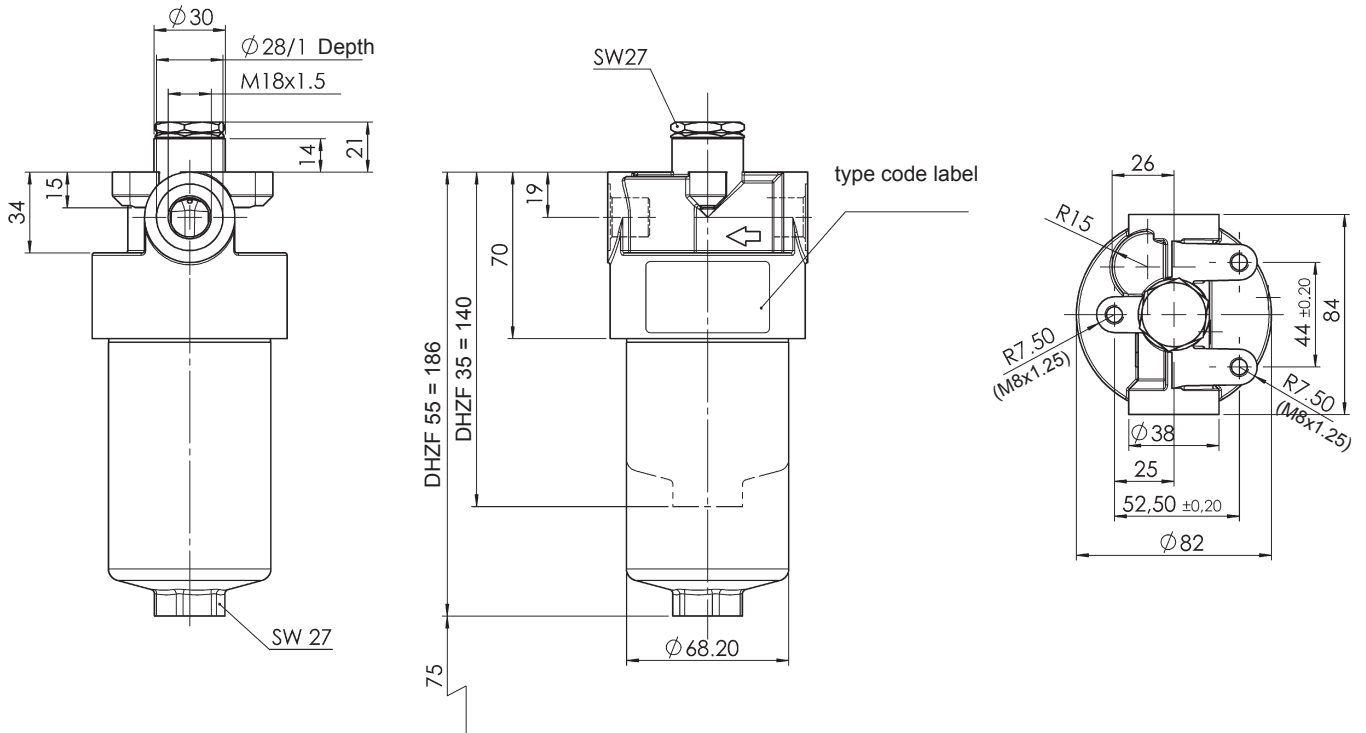


DHZF 160、 240、 260、 280

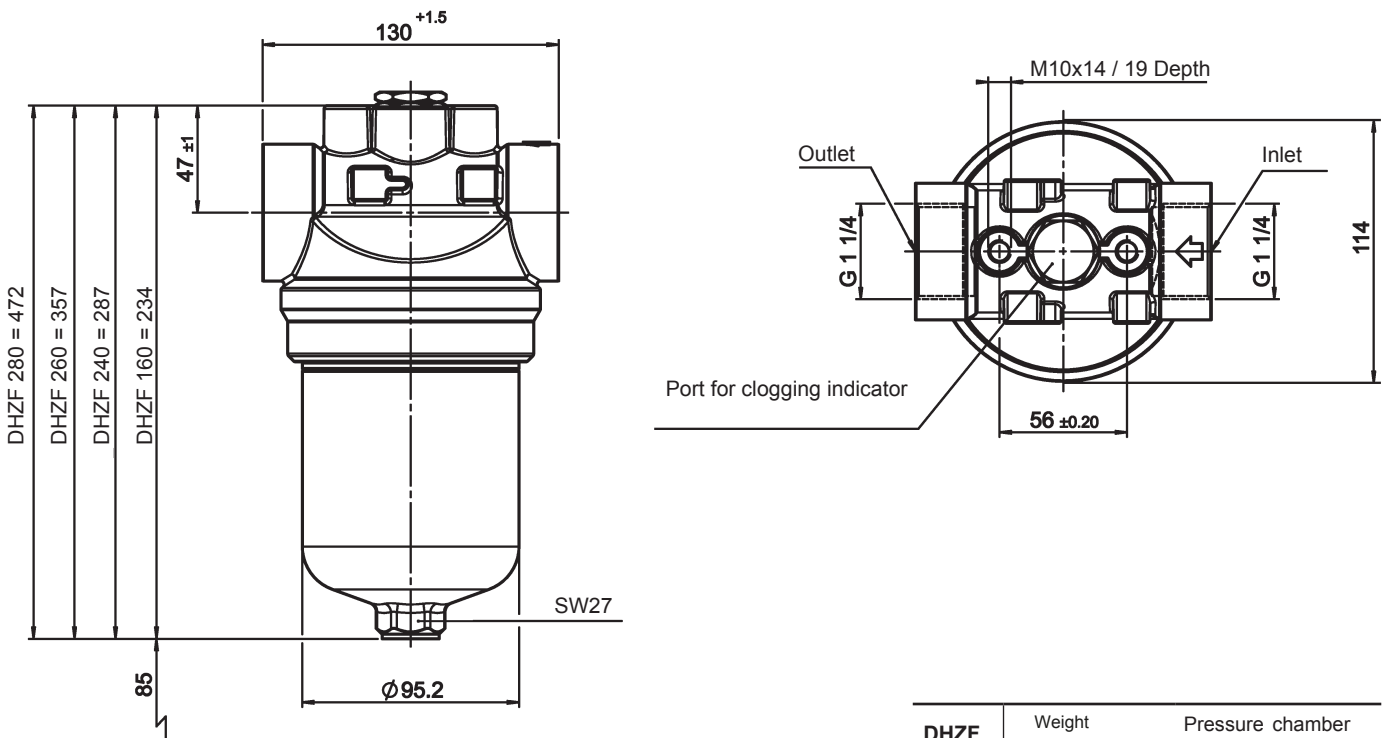


DIMENSIONS

DHZF 35 55



DHZF 160 240 260 280



Annotation:

All information in this manual relates to the described working environment and application conditions. For applications and working conditions that are not described, please contact the relevant technical department. Technical modifications are possible.

DHZF	Weight incl. element [kg]	Pressure chamber volume [l]
35	1.00	0.19
55	1.15	0.33
160	2.00	0.60
240	2.31	0.90
260	2.76	1.30
280	3.28	1.70