

DHZE Series

● DESCRIPTION

In-line filter

Connection type and size:

Threaded connection: G $\frac{3}{4}$ " G1" M26x1.5 M33x2

Maximum flow rate up to 130 L/min

● TECHNICALPARAMETER

Maximum working pressure: 50 bar

Bypass valve opening pressure: 3.5bar

Transmitter opening pressure: 2.5 bar

Temperature range: -10 to +80



● MATERIALS

Head: Cast aluminium

Filter bowl: Aluminium

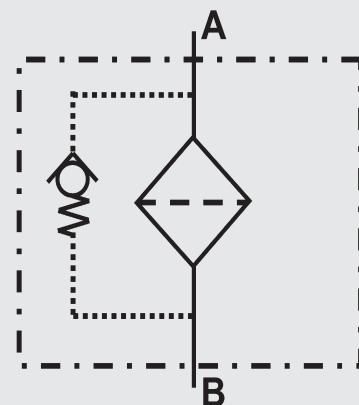
Seals: NBR nitrile rubber (standard)
or FKM fluororubber (customizable)

Filter element material: Fiberglass and metal mesh

● MEDIA COMPATIBILITY

Suitable for mineral oil, lubricating oil, fire-resistant oil, and rapidly biodegradable media.
(If used for water-based or special media, please consult our sales department.)

Symbol for hydraulic systems



Ordering Options Table

DHZE 100 D F 10 N 4 N B3.5

Filter type

Filter specification

100 200

Connection type and size

Type	Connection	Filter size	
		100	200
C	G ¾	●	●
D	G 1	●	●
E	M26 x 1.5	●	●
L	M33 x 2	●	●

Filter element material

F: Glass fiber
W: Stainless steel wire mesh

Filtration rating (µm)

(F): 03 05 10 20
(W): 05 10 20 30

Seals

N: NBR V: FKM

Type code

1-4 Installation position of the clogging indicator

Differential pressure transmitter

A: Steel blanking plug in indicator port
B: Visual (Automatic reset)
BM: Visual (Manual reset)
C: Electrical indicator
CM: Visual and electrical indicators
CL: Visual and electrical indicators
D: Electrical indicator
DM: Electrical indicator Plug DT 04-2P

Bypass valve opening pressure

B0 = without bypass valve
B3.5 = 3.5 bar

Filter Element

	DYZE	75	F	10	N
Filter element type					
Filter element specification					
100 200					
Filter element material					
F: Fiberglass W: Stainless steel wire mesh					
Filtration fineness(μm)					
(F): 03 05 10 20 30 (W): 05 10 20 30					
Seals					
N: NBR V: FKM					

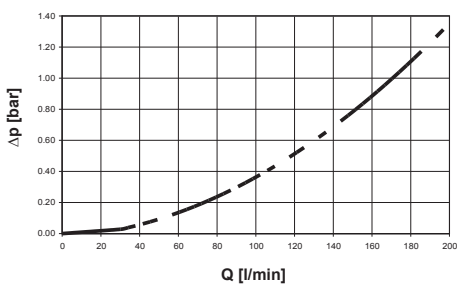
Maintenance Instructions

Filter housing must be grounded
 When using electric plugging, please replace the filter element.
 The system must be turned off before removing the clog indicator light and power connector.

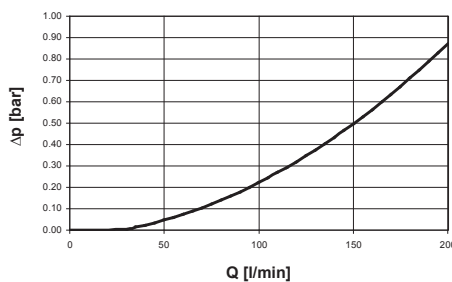
Δp-QISO 3968

The housing curves apply to mineral oil with a density of 0.86 kg/dm³ and a kinematic viscosity of 30 mm²/s.
 In this case the differential pressure changes proportionally to the density.

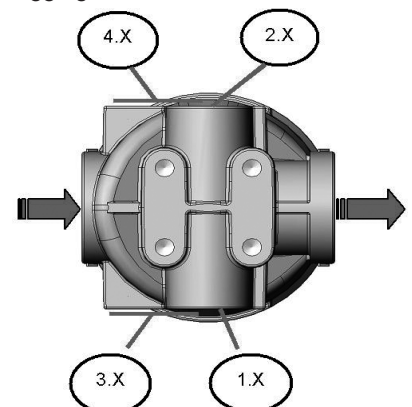
DHZE 100、200: G^{3/4}



DHZE 100、200: G1

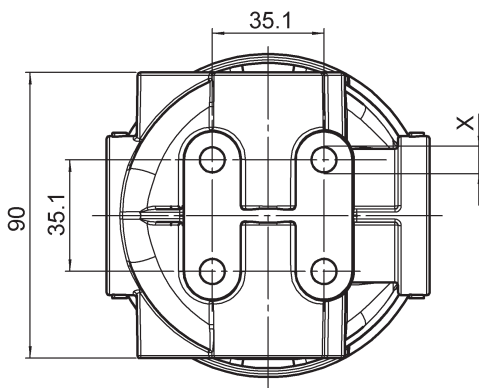
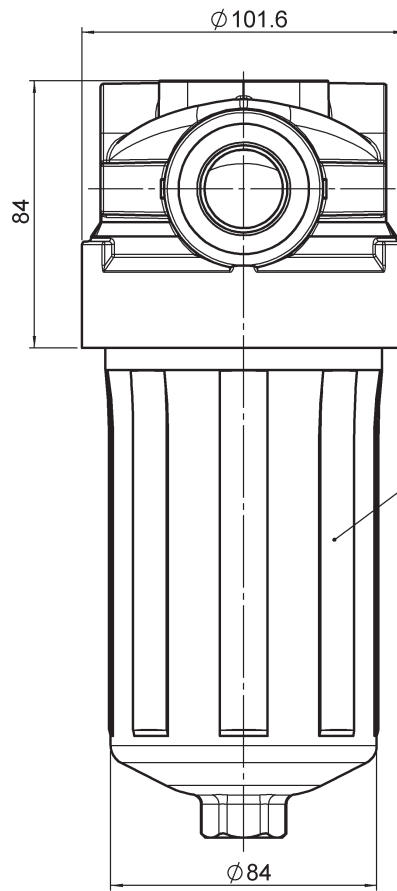
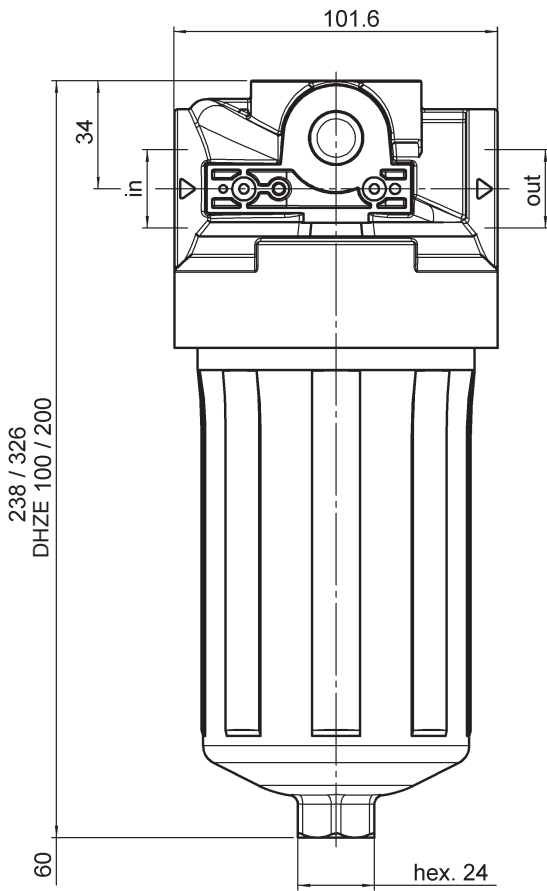


Type Code: Installation position of The Clogging indicator



DIMENSIONS

DHZE 100 200



GRADIENT COEFFICIENTS (SK)

The gradient coefficients in mbar/(l/min) apply to mineral oils with a kinematic viscosity of 30 mm²/s. The pressure drop changes proportionally to the change in viscosity

DHZE	F			
	3 μm	5 μm	10 μm	20 μm
100	12.0	9.0	4.6	3.4
200	7.0	5.3	2.7	2.0

DHZE	Weight incl. element [kg]	Vol. of pressure chamber [l]
100	1.46	0.71
200	1.74	1.12

Annotation:

All information in this manual relates to the described working environment and application conditions. For applications and working conditions that are not described, please contact the relevant technical department. Technical modifications are possible.