

PHHE Series

● DESCRIPTION

Return filter

Connection type and size:

Threaded connection: 1/2" 3/4" 1" 1-1/4" 1-1/2" 2" 2-1/2"

SAE Flange connection: 1-1/4" 1-1/2" 2" 2-1/2"

Maximum flow rate up to 2100 l/min

● TECHNICAL PARAMETER

Maximum working pressure: 10 bar

Bypass valve opening pressure: 2.5 bar

Transmitter opening pressure: 2.0 bar

Temperature range: -25 to +110



● MATERIALS

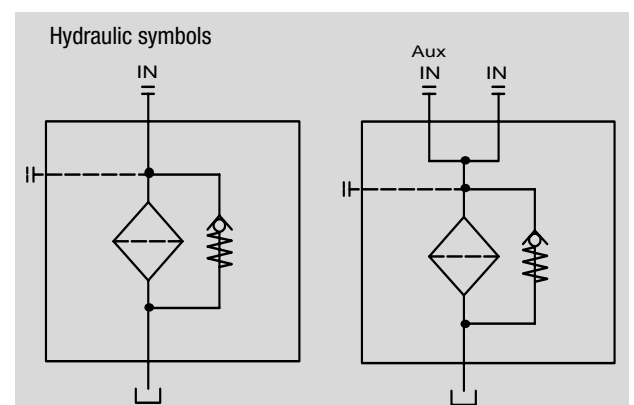
Head: Cast aluminium

Filter bowl: Tinned Steel

Seals: NBR nitrile rubber (standard)

Or FKM fluororubber (customizable)

Filter element material: Fiberglass



● MEDIA COMPATIBILITY

Suitable for mineral oil, lubricating oil, fire-resistant oil, and rapidly biodegradable media.

(If used for water-based or special media, please consult our sales department.)

Weights [kg] and volumes [dm³] 3]

Filter series	Weights [kg]					Volumes [dm ³]				
	Length 1	2	3	4	5	Length 1	2	3	4	5
PHHE 250	3.60	3.90	4.20	5.60	-	4.40	4.40	5.40	8.00	-
PHHE 630	6.50	7.00	7.40	8.50	10.50	7.30	9.00	11.00	13.00	19.20

FILTER ASSEMBLY SIZING

Flow rates (l/min)

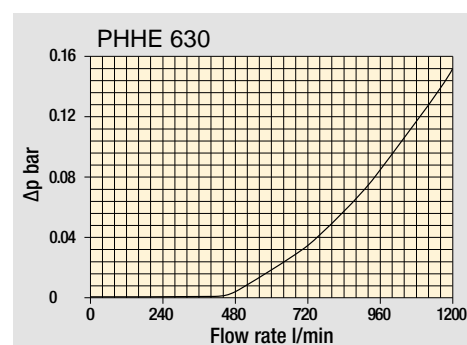
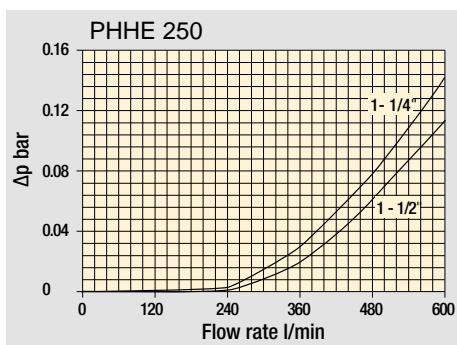
Filter series	Length	Filter element design - F series					Filter element design - W series			
		F03	F05	F10	F20	F30	M25	M60	M90	
PHHE 250	1	93	102	210	251	315	339	383	1093	
	2	124	151	327	412	421	460	514	1122	
	3	189	221	418	445	500	544	616	1137	
	4	261	304	592	670	766	832	923	1166	
PHHE 630	1	160	200	369	423	518	565	632	1894	
	2	240	257	571	611	1045	1137	1285	1929	
	3	330	374	745	788	1308	1416	1577	1938	
	4	374	403	887	1010	1348	1448	1612	1956	
	5	625	698	1210	1257	1723	1839	1929	2121	

Maximum flow rate for a complete return filter with a pressure drop $\Delta p = 0.5$ bar.

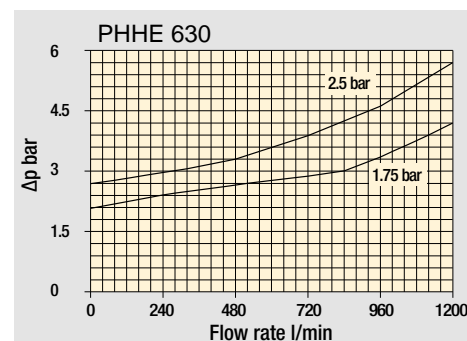
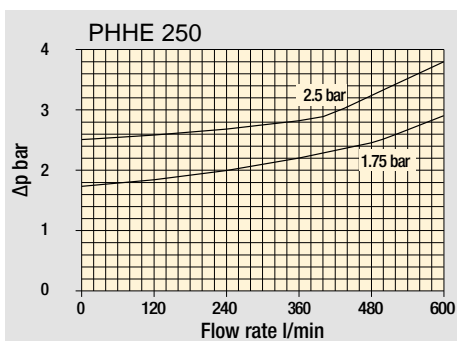
The reference fluid has a kinematic viscosity of 30 mm²/s (cSt) and a density of 0.86 kg/dm³.

The curves are plotted using mineral oil with density of 0.86 kg/dm³ in compliance with ISO 3968 Δp varies proportionally with density.

Filter housings Δp pressure drop



Bypass valve pressure drop





Ordering Options Table

PHHE 250 4 F2 F 10 N A E

Filter type

Filter specification

250 630

Length

1 2 3 4 5

Connection type and size

Type	Connection	Filter specification			
		Main Connections		Rear connections	
		250	630	250	630
G6	G1 - 1/2"	●	-	G1 1/4"	-
F2	SAE 1 - 1/2"	●	-	SAE 1 - 1/4"	-
F4	SAE 2 - 1/2"	●	-	-	SAE 2"

Filter element material

F: Fiberglass

W: Stainless steel wire mesh

Filter fineness(μm)

F: 03 05 10 20 30

W: 25 60 90

Seals

N: NBR V: FKM

Differential pressure transmitter

A: Steel blanking plug in indicator port

E: Vacuum gauge indicator

BM: Visual (Automatic reset)

B: Visual (Automatic reset)

CM: Electrical indicator

C: Electrical indicator

CL: Visual and electrical indicators

Bypass valve opening pressure

B = 1.75 bar

E = 3 bar

Filter Element

PYHE 250 4 F 10 N

Filter element type

Filter element specification

250 630

Length

1 2 3 4 5

Filter element material

- F: Fiberglass
- W: Stainless steel wire mesh

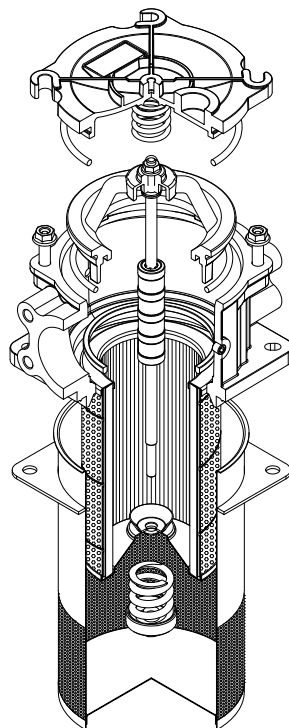
Filter fineness(μm)

- F: 03 05 10 20 30
- W: 25 60 90

Seals O-ring

- N: NBR
- V: FKM

PHHE 250 - 630



DIMENSIONS

