

PHXC Series

● DESCRIPTION

Suction filter

Connection type and size:

Threaded connection: 1" 1-1/4" 1-1/2"

SAE Flange connection: 1-1/2"

Maximum flow rate up to 160 l/min

● TECHNICAL PARAMETER

Maximum working pressure: 10 bar

Bypass valve opening pressure: 0.3 bar

Transmitter opening pressure: 0.2 bar

Temperature range: -29 to +120



● MATERIALS

Head: Cast aluminium

Filter barrel: Cast aluminium

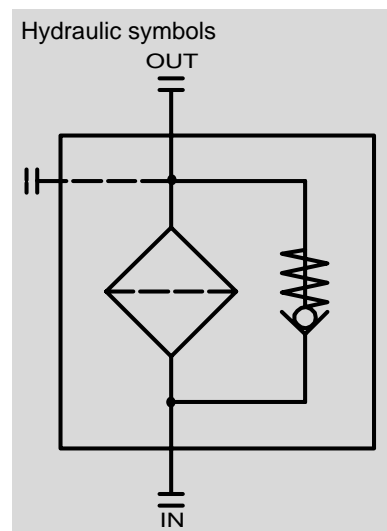
Seals: NBR nitrile rubber (standard)

Or FKM fluororubber (customizable)

Filter element material: Stainless steel wire mesh

● MEDIA COMPATIBILITY

Suitable for mineral oil, lubricating oil, fire-resistant oil, and rapidly biodegradable media.
(If used for water-based or special media, please consult our sales department.)



Ordering Options Table

PHXC 250 G6 N C 90 A B

Filter type

Filter specification

250

Connection type and size

series	Connection	Type			
		G4	G5	G6	F4
250	screw thread	G 1"	G1-1/4"	G1-1/2"	-
	SAE flange	-	-	-	1-1/2"

Seals

N: NBR V: FKM

Magnetic Options

C = With magnetic filter
W = Without magnetic filter

Filter fineness(μm)

25 60 90 250

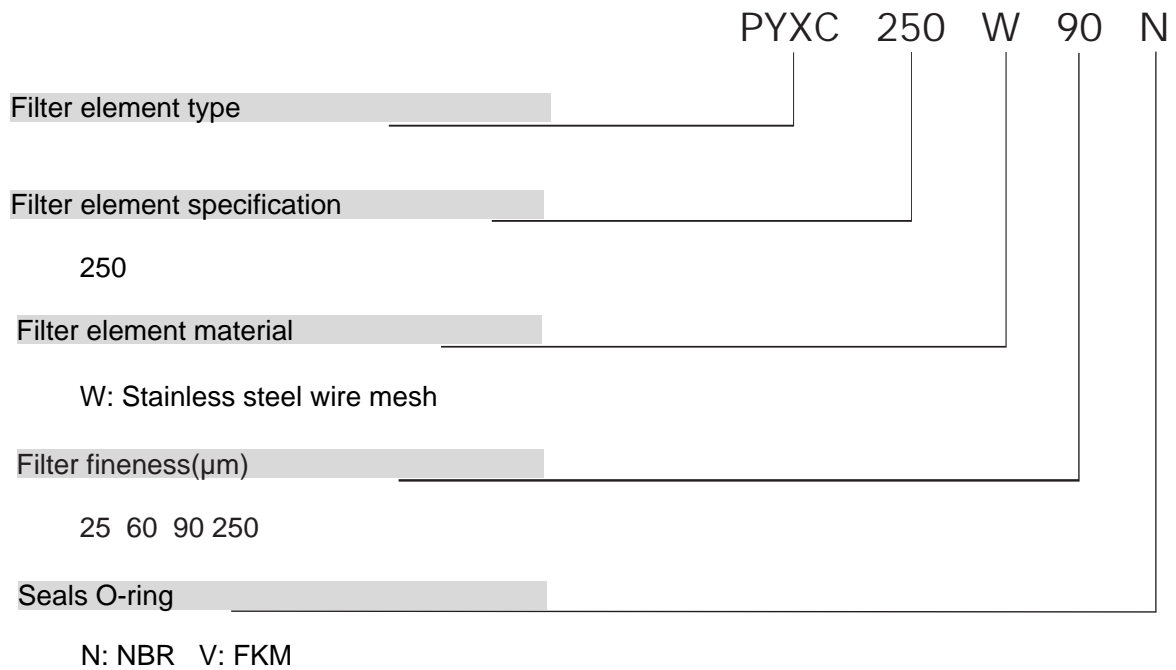
Differential pressure transmitter

A: Steel blanking plug in indicator port
E: Vacuum gauge indicator
BM: Visual (Automatic reset)
B: Visual (Automatic reset)
CM: Electrical indicator
C: Electrical indicator
CL: Visual and electrical indicators

Bypass valve opening pressure

B = 0.3 bar

Filter Element



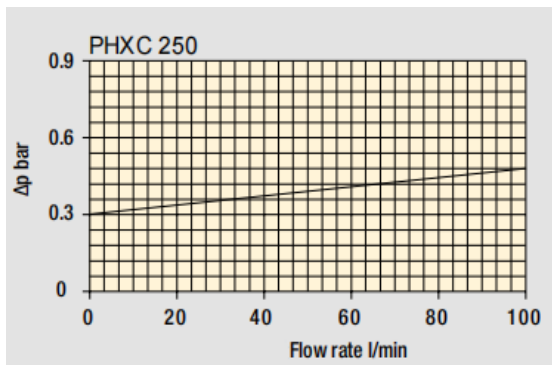
Maximum flow rate for a complete suction filter with a pressure drop $\Delta p = 0.08$ bar.

The reference fluid has a kinematic viscosity of $30 \text{ mm}^2/\text{s}$ (cSt) and a density of $0.86 \text{ kg}/\text{dm}^3$ for different pressure drop or fluid viscosity.

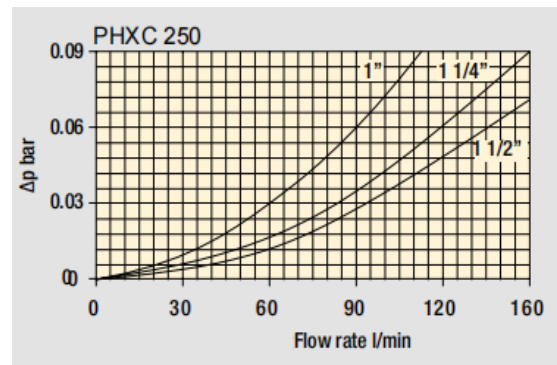
Filters pressure drop Δp in function of connection type

The curves are plotted using mineral oil with density of $0.86 \text{ kg}/\text{dm}^3$ in compliance with ISO 3968 Δp varies proportionally with density.

Filter housings Δp pressure drop



Bypass valve pressure drop



DIMENSIONS

